

PRODUCT DATASHEET

Adiponectin Globular Human E. coli

Cat. No.: RD172112025
Type: Recombinant protein
Size: 0.025 mg
Source: E. coli
Species: Human

Description

Total 171AA. N-terminal His-tag and the protease cleavage site, 31 extra AA (highlighted). The AA sequence is homologous to the amino acid sequence (105–244) of the Human full-length Adiponectin.

Other names

Adipocyte C1q and collagen domain-containing protein, Adipocyte complement-related 30 kDa protein, ACRP30, Adipose most abundant gene transcript 1 protein, apM-1, Gelatin-binding protein, ADIPOQ, ACDC, APM1, GBP28

Introduction to the molecule

Adiponectin, also referred to as Acrp30, AdipoQ and GBP-28, is a recently discovered 244 amino acid protein, the product of the apM1 gene, which is physiologically active and specifically and highly expressed in adipose cells. The protein belongs to the soluble defence collagen superfamily; it has a collagen-like domain structurally homologous with collagen VIII and X and complement factor C1q-like globular domain. Adiponectin forms homotrimers, which are the building blocks for higher order complexes found circulating in serum. Together, these complexes make up approximately 0.01% of total serum protein. Adiponectin receptors AdipoR1 and AdipoR2 have been recently cloned; AdipoR1 is abundantly expressed in skeletal muscle, whereas AdipoR2 is predominantly expressed in the liver. Paradoxically, adipose tissue-expressed adiponectin levels are inversely related to the degree of adiposity. Adiponectin concentrations correlate negatively with glucose, insulin, triglyceride concentrations, liver fat content and body mass index and positively with high-density lipoprotein-cholesterol levels, hepatic insulin sensitivity and insulin-stimulated glucose disposal. Adiponectin has been shown to increase insulin sensitivity and decrease plasma glucose by increasing tissue fat oxidation. Of particular interest is that low adiponectin serum levels predict type 2 diabetes independent of other risk factors. Adiponectin also inhibits the inflammatory processes of atherosclerosis suppressing the expression of adhesion and cytokine molecules in vascular endothelial cells and macrophages, respectively. This adipokine plays a role as a scaffold of newly formed collagen in myocardial remodelling after ischaemic injury and also stimulates angiogenesis by promoting cross-talk between AMP-activated protein kinase and Akt signalling in endothelial cells. Low serum adiponectin levels are found in patients with coronary artery disease. Moreover, high circulating levels of adiponectin are associated with decreased risk of myocardial infarction, independent of other factors. Altogether, adiponectin has the potential to become a clinically relevant parameter to be measured routinely in subjects at risk for type 2 diabetes, atherosclerosis and the metabolic syndrome.

Research topic

Animal studies, Coronary artery disease, Diabetology - Other Relevant Products, Energy metabolism and body weight regulation, Chronic renal failure

Amino Acid sequence

MSWWHHHHHH NWNIPPTTQDT TQDLWFEGAM GGEGAYVYRS AFSVGLETYV TIPNMPPIRFT KIFYNQNHY DGSTGKFHCN
IPGLYYFAYH ITVYMKDVKV SLFKKDKAML FTYDQYQENN VDQASGSVLL HLEVGDQVWL QVYGEGERNG LYADNDNDST
FTGFLLYHDT N

Purity

>95%

Endotoxin

< 0.1 EU/ μ g

Formulation:

Filtered (0.4 μ m) and lyophilized in 0.5 mg/mL in 0.05 M phosphate buffer, 0.075 M NaCl, pH 7.4

Reconstituion:

Add deionized water to prepare a working stock solution of approximately 0.5 mg/mL and let the lyophilized pellet dissolve completely. Product is not sterile! Filter your culture media/working solutions containing this product before using in cell culture.

Shipping

At ambient temperature. Upon receipt, store the product at the temperature recommended below.

Storage, Stability/Shelf Life

Store the lyophilized protein at -80 °C. Lyophilized protein remains stable until the expiry date when stored at -80 °C. Aliquot reconstituted protein to avoid repeated freezing/thawing cycles and store at -80 °C for long term storage. Reconstituted protein can be stored at 4 °C for a week.

Quality control

BCA to determine quantity of the protein.

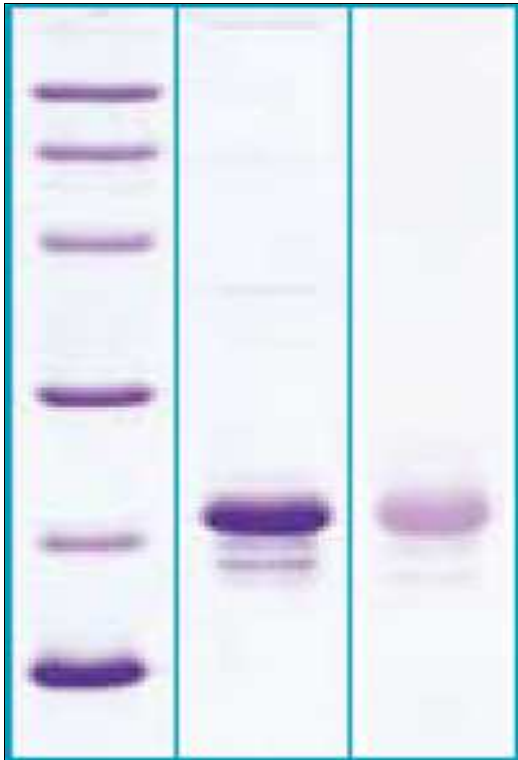
SDS PAGE to determine purity of the protein.

GFC to determine purity of the protein.

LAL to determine quantity of endotoxin.

Applications

Binding assay, ELISA, Ex vivo and in vivo activity analysis, In vitro, Western blotting



12% SDS-PAGE separation of Human globular Adiponectin

1. M.W. marker – 14, 21, 31, 45, 66, 97 kDa

2. reduced and heated sample, 5µg/lane

3. non-reduced and non-heated sample, 5µg/lane