

BioVendor new products

November, 2017

Dear customer, we would like to introduce our new products and hope you will find them interesting. Below is a list of events, in which we plan to participate in 2017:

MEDICA 2017 (13 \ 11 \ 2017 - 16 \ 11 \ 2017 - Düsseldorf)

miRNA

NEW MIREIA KITS

CAT. NO.	STATUS	NAME	ASSAY FORMAT
RDM0008H	Coming soon	hsa-miR-16-5p miREIA	miREIA - miRNA enzyme immunoassay
RDM0001H	New	hsa-miR-21-5p miREIA	miREIA - miRNA enzyme immunoassay
RDM0009H	Coming soon	hsa-miR-23a-3p miREIA	miREIA - miRNA enzyme immunoassay
RDM0002H	Coming soon	hsa-miR-95-5p miREIA	miREIA - miRNA enzyme immunoassay
RDM00013H	Coming soon	hsa-miR-142-5p miREIA	miREIA - miRNA enzyme immunoassay
RDM0000C	Coming soon	cel-miR-39-3p miREIA	miREIA - miRNA enzyme immunoassay

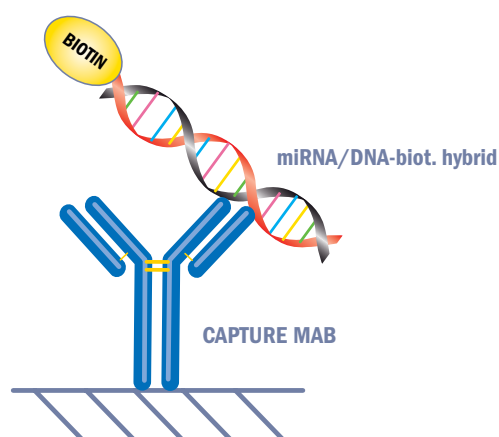
miREIA - miRNA Enzyme Immunoassay

» FEATURED PRODUCT: hsa-miR-21-5p miREIA miREIA - microRNA Enzyme Immunoassay

Molecular diagnostics meets immunoassays

- Quantitative
- Robust
- Fast
- Affordable

miRNA isolated from a patient sample is hybridized to complementary biotinylated DNA oligonucleotide probe. The miRNA/DNA hybrids are then processed in an ELISA format in a microtiter plate coated with a monoclonal antibody specific to perfectly matched miRNA/DNA hybrids.



miREIA kits have been designed to quantify circulating miRNA from whole blood, enabling investigators to explore these promising biomarkers in various conditions including **cancer, cardiovascular diseases, pulmonary diseases, regulation of immunological processes reliably** and in an easy-to-use format.

BioVendor has now launched **hsa-miR-21-5p miREIA**, the first kit of a rapidly expanding new product line.

For this and more BioVendor miREIA kits coming very soon, please visit www.biovendor.com/mirna.

NEW IMMUNOASSAYS

CAT. NO.		NAME		IVD/RUO	ASSAY FORMAT
RD191367100R	Human	Angiotensinogen ELISA	ELISA	RUO	Sandwich ELISA, Biotin-labelled antibody
RD191371200R	Human	Annexin A1 ELISA	ELISA	RUO	Sandwich ELISA, Biotin-labelled antibody
RD191362200R	Human	Cyclophilin 40 ELISA	ELISA	RUO	Sandwich ELISA, Biotin-labelled antibody
RD192247200R	Human	Heart FABP (FABP3) ELISA	ELISA	RUO	Sandwich ELISA, Biotin-labelled antibody
RD194375200R	Human	Matrix Metalloproteinase-8 ELISA	ELISA	RUO	Sandwich ELISA, Biotin-labelled antibody

» FEATURED PRODUCT: HUMAN HEART FABP (FABP3) ELISA

H-FABP (Heart fatty acid binding protein, FABP3) is a **sensitive biomarker for myocardial infarction (MI)**.

H-FABP is released from cardiac myocytes following an ischemic episode and can be detected in the blood within one to three hours of the pain. To identify myocardial infarction and acute coronary syndrome, **a combination of H-FABP with troponin shows increased sensitivity** over troponin alone in patients with chest pain onset.

H-FABP also has prognostic value, it is proved to be a statistically significant predictor of death or MI at one year, independent of troponin T, ECG and clinical examination.

- Validated for human serum, plasma, urine, cerebrospinal fluid, bronchoalveolar lavage fluid, amniotic fluid and tissue homogenates
- Very high sensitivity (LOD 5.6 pg/ml)
- Interesting new member of broad BioVendor portfolio of FABPs biomarkers

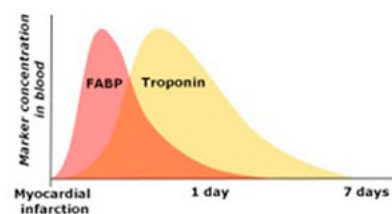
H-FABP is a small cytosolic protein expressed predominantly in the **cardiac myocytes**, it is found at much lower levels in **skeletal muscle, kidney, liver** and **small intestine**. H-FABP can quickly pass through the kidney and be measured noninvasively in urine.

See more about [Heart FABP \(FABP3\) Human ELISA](#)

RELATED PRODUCTS

[RD172247100](#) Heart Fatty Acid Binding Protein Human *E. coli*

The Ideal Combination



NEW RECOMBINANT PROTEINS

CAT. NO.		NAME	SIZE	SOURCE
RD172565100-B	Human	Argonaute-2 N-Terminal Region	0.1 mg	<i>E. coli</i>
RD172551100	Human	Brain-Derived Neurotrophic Factor Propeptide	0.1 mg	HEK293
RD172568025	Human	Interleukin-3	0.025 mg	<i>E. coli</i>
RD172513100	Human	Lipopolysaccharide-Binding Protein	0.1 mg	HEK293
RD172498100	Human	Low-Density Lipoprotein Receptor-Related Protein 4	0.1 mg	HEK293
RD872561100	<i>Betula pendula</i>	Major Pollen Allergen Bet v 1-A	0.1 mg	<i>E. coli</i>
RD172440100	Human	Matrix Metalloproteinase-2	0.1 mg	HEK293
RD172510100	Human	Matrix Metalloproteinase-3	0.1 mg	HEK293
RD172439100	Human	Matrix Metalloproteinase-9	0.1 mg	HEK293
RD172511100	Human	Metalloproteinase Inhibitor 1	0.1 mg	HEK293
RD172562100	Human	Neurofilament light polypeptide	0.1 mg	<i>E. coli</i>
RD172523100	Human	Neurogranin	0.1 mg	<i>E. coli</i>
RD172003100	Human	Osteoprotegerin	0.1 mg	HEK293
RD172520100	Human	Pulmonary Surfactant-Associated Protein B	0.1 mg	HEK293
RD172098100-B	Human	Visfatin	0.1 mg	<i>E. coli</i>
RD172544100	Human	WNT1-Inducible-Signaling Pathway Protein 1	0.1 mg	HEK293

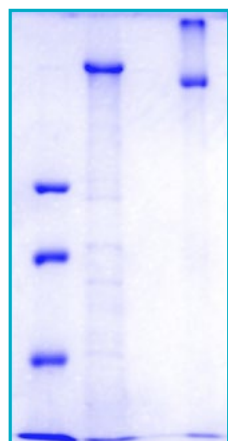
» FEATURED PRODUCT: HUMAN LOW-DENSITY LIPOPROTEIN RECEPTOR-RELATED PROTEIN 4

Low-density lipoprotein receptor-related protein 4 (LRP-4), also known as multiple epidermal growth factor-like domains 7 (MEGF7), is a protein that in humans is encoded by the LRP4 gene. LRP-4 is a member of the Lipoprotein receptor-related protein family and may be a regulator of Wnt signaling.

LRP4 as a crucial factor for **neuromuscular junction (NMJ)** formation may have implications for human **neuromuscular diseases** such as myasthenia syndromes. LRP4 mutations occur in Cenani-Lenz syndactylism.

BioVendor produces recombinant **Human LPR-4 in HEK293** cell line. The protein contains 210 AA. MW: 23.7 kDa (calculated).

UniProtKB acc. No. O75096 (Ser21-Ser1725). C-terminal His-tag. Altogether 14 extra AA (2 AA on the N-terminus, 12 AA on the C-terminus). Protein identity confirmed by LC-MS/MS. Endotoxin-free.



8% SDS-PAGE separation of Human LRP-4:

1. M.W. marker – 14, 21, 31, 45, 66, 97 kDa
2. Reduced and boiled sample, 2.5 µg/lane
3. Non-reduced and non-boiled sample, 2.5 µg/lane

See more about [Low-Density Lipoprotein Receptor-Related Protein 4 Human HEK293](#)



MetaCell

» PERSONALIZED CANCER THERAPY USING CIRCULATING TUMOR CELLS (CTCS)

The MetaCell® kit is intended for a simple separation of circulating rare cells from peripheral blood (or other body fluids) using a size-based separation principle. The following cell types may be enriched: circulating tumor cells (CTCs), disseminated tumor cells (DTCs), circulating tumor microemboli (CTM) and circulating endometrial cells (CECs).



- Easy, fast and inexpensive
- No extra costs
- All types of solid tumors – cell surface
- Antigen-independent
- Human and animal samples
- Gentle to isolated cells – keeping CTCs and DTCs
- Viable for cultivation and downstream analysis

CAT. NO.	NAME	TYPE	SIZE
<u>EMC001</u>	MetaCell	Circulating rare cells separation kit	10 pcs/box

See more about MetaCell at www.biovendor.com/liquid-biopsy