

BioVendor new products

July, 2018

Dear customer, we would like to introduce our new products and hope you will find them interesting. Below is a list of events, in which we plan to participate in 2018:

AACC 2018 (29 \ 07 \ 2018 - 02 \ 08 \ 2018 - Chicago)

MEDICA 2018 (12 \ 11 \ 2018 - 15 \ 11 \ 2018 - Dusseldorf)

miRNA

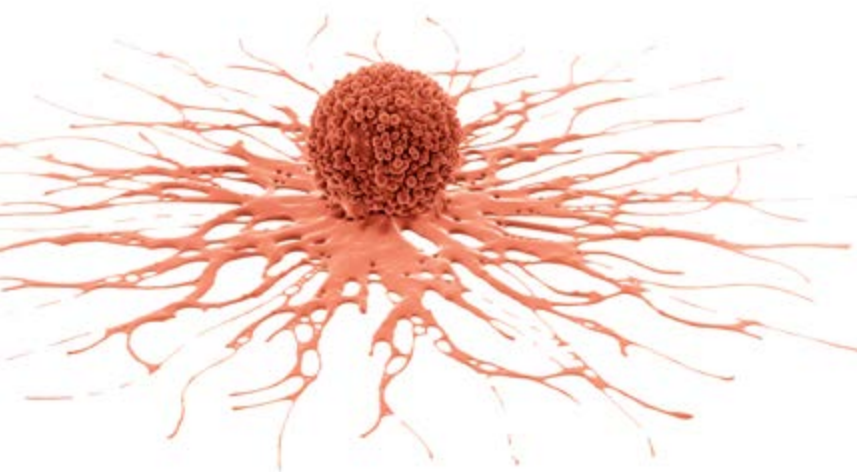
NEW miREIA KITS

CAT. NO.	STATUS	NAME	ASSAY FORMAT
RDM0007H	Coming soon	hsa-miR-15a-5p miREIA	miREIA - miRNA enzyme immunoassay
RDM0005H	New	hsa-miR-191-5p miREIA	miREIA - miRNA enzyme immunoassay

miREIA - miRNA Enzyme Immunoassay

» FEATURED PRODUCT: hsa-miR-15a-5p miREIA

A number of studies have demonstrated that **microRNAs (miRNAs) act** as tumor suppressors or oncogenes **in human cancer**. They also influence tumorigenesis enabling communication between cells within the tumor microenvironment. Extracellular miRNAs have potential as biomarkers for the prediction and prognosis of cancer in both solid tumors and hematologic malignancies.



miR-15a is downregulated in many types of cancer, including prostate cancer, colorectal cancer, hepatoma, prostate cancer, chronic lymphocytic leukemia, nasopharyngeal carcinoma, malignant melanoma, human brain glioma and breast cancer. **It acts as a tumor suppressor**, promoting apoptosis and inhibiting cell proliferation by targeting multiple oncogenes, including Bcl-2, Mcl1, CcnD1 and Wnt3A.

Besides cancer, circulating **miR-15a** is downregulated in patients with **ST-segment elevated myocardial infarction**. miR-15a is increased in plasma of **diabetic patients**, correlating with disease severity.

For these and more BioVendor miREIA kits, please visit www.biovendor.com/mirna.

miREIA is a BioVendor proprietary method based on combination of immunoassay and molecular biological principles. The main advantage is the **quantitative determination of miRNA** concentrations.

NEW IMMUNOASSAYS

CAT. NO.		NAME		IVD/RUO	ASSAY FORMAT
RIG018R	Human	Amyloid beta (Aggregated) ELISA	ELISA	RUO	Sandwich ELISA, HRP-labelled antibody
RIG013R	Mouse	Amyloid beta 40 ELISA	ELISA	RUO	Sandwich ELISA, HRP-labelled antibody
RIG012R	Mouse	Amyloid beta 42 ELISA	ELISA	RUO	Sandwich ELISA, HRP-labelled antibody
RIG017R	Human	Amyloid beta 42 ELISA, Ultrasensitive	ELISA	RUO	Sandwich ELISA, HRP-labelled antibody
RIG019R	Human	Amyloid Precursor Protein ELISA	ELISA	RUO	Sandwich ELISA, Biotin-labelled antibody
RIG006R	Human	Apolipoprotein (A1) ELISA	ELISA	RUO	Sandwich ELISA, Biotin-labelled antibody
RIG005H	Human	Apolipoprotein E (AD2) ELISA	ELISA	RUO	Sandwich ELISA, Biotin-labelled antibody
RIG004R	Human	Cardiac Troponin I ELISA	ELISA	RUO	Sandwich ELISA, Biotin-labelled antibody
RD191364200R	Human	Cyclophilin F (PPIF) ELISA	ELISA	RUO	Sandwich ELISA, Biotin-labelled antibody
RDM0002H	Human	CXCL13 (BLC) ELISA	ELISA	RUO	Sandwich ELISA, HRP-labelled antibody
RIG007R	Human	CHI3L1 (YK-40) ELISA	ELISA	RUO	Sandwich ELISA, HRP-labelled antibody
RD191248200R	Human	Ileal FABP (FABP6) ELISA	ELISA	RUO	Sandwich ELISA, Biotin-labelled antibody
RD194572200R	Human	Interleukin-10 ELISA	ELISA	RUO	Sandwich ELISA, Biotin-labelled antibody
RIG001R	Human	KIM-1 (TIM-1) ELISA	ELISA	RUO	Sandwich ELISA, HRP-labelled antibody
RIG002R	Mouse	KIM-1 (TIM-1) ELISA	ELISA	RUO	Sandwich ELISA, HRP-labelled antibody
RIG003R	Rat	KIM-1 (TIM-1) ELISA	ELISA	RUO	Sandwich ELISA, HRP-labelled antibody
RD191486200R	Human	NT-proBNP ELISA	ELISA	RUO	Sandwich ELISA, Biotin-labelled antibody
RIG008R	Human	Sclerostin (SOST) ELISA	ELISA	RUO	Sandwich ELISA, HRP-labelled antibody
RIG009R	Human	ST2 ELISA	ELISA	RUO	Sandwich ELISA
RIG022R	Human	Synuclein alpha ELISA	ELISA	RUO	Sandwich ELISA, HRP-labelled antibody
RIG015R	Human	Tau (pS199) ELISA	ELISA	RUO	Sandwich ELISA, HRP-labelled antibody
RIG014R	Human	Tau (pS396) ELISA	ELISA	RUO	Sandwich ELISA, HRP-labelled antibody
RIG020R	Human	Tau (pT181) ELISA	ELISA	RUO	Sandwich ELISA, HRP-labelled antibody
RIG016R	Human	Tau (pT231) ELISA	ELISA	RUO	Sandwich ELISA, HRP-labelled antibody
RIG011R	Human	Tau (Total) ELISA	ELISA	RUO	Sandwich ELISA, HRP-labelled antibody
RIG021R	Mouse	Tau (Total) ELISA	ELISA	RUO	Sandwich ELISA, HRP-labelled antibody
RIG010R	Human	TWEAK (TNFSF12) ELISA	ELISA	RUO	Sandwich ELISA, HRP-labelled antibody

» EXPANSION OF IVD PRODUCTS

Within the framework of our continuous expansion of **IVD products**, we are happy to announce that further BioVendor products are now available for IVD use:

[RD192247200R](#) Heart FABP (FABP3) Human ELISA

[RD194015200R](#) Interleukin-6 Human ELISA

[RD191485200R](#) NT-proANP Human ELISA

[RD191473200R](#) PCSK9 Human ELISA

[RD191477200R](#) Pentraxin 3 Human ELISA



For full offer IVD products please visit [click here CE IVD Products](#)

» FEATURED PRODUCT: HUMAN NT-proBNP ELISA

NT-proBNP is an **excellent predictor of cardiovascular risk and mortality** in patients with diabetes and can also be used for prognostic applications in patients with acute coronary syndrome. NT-pro BNP is an **ideal biomarker for heart failure in the primary care** setting.

NT-proBNP (N-terminal pro-B-type natriuretic peptide) is released from the ventricular cardiac myocytes in response to left ventricular strain or ischemia and has been found to be an important biomarker for left ventricular systolic dysfunction and left ventricular stress in the general population. NT-proBNP has a longer half-life than BNP (1-2 h vs. 20 min) leading to higher circulating levels and greater stability. Because NT-proBNP is metabolized in the kidneys, the serum level of NT-proBNP can be increased in patients with diseases that damage renal function.

Elevated levels of NT-pro BNP were described in patients with **heart failure, myocardial infarction** and **pulmonary embolism, acute or chronic cor pulmonale, acute dyspnea**, and also in patients with **non-cardiac pathologies**, e.g. **anemia, chronic renal failure** or **sepsis**.

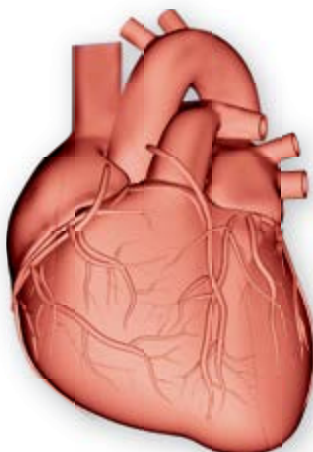
NT-proBNP

Differential diagnostics
cardial/noncardial etiology
= **established marker**

Indicator of **heart overload**

= **heart failure**
= **myocardial infarction**
= **larger pulmonary emboli**
= **pulmonary hypertension**

Marker for **therapy monitoring**



- Validated for human serum, plasma (EDTA, citrate, heparin), urine, and cerebrospinal fluid
- Excellent sensitivity (LOD 10 pg/ml)
- Interesting new member of broad BioVendor portfolio of CVD biomarkers

See more about [Human NT-proBNP ELISA](#)

RELATED PRODUCTS

[RD172486100](#) Natriuretic Peptides B Human *E. coli*

NEW PROTEINS

CAT. NO.		NAME	SIZE	SOURCE
RD172034025	Human	Clusterin	0.025 mg	HEK293
RD972038100-B	Hepatitis B virus	Hepatitis B Virus Protein X	0.1 mg	<i>E. coli</i>
RD172569100	Human	IL-4	0.1 mg	<i>E. coli</i>
RD172576100	Human	LIF	0.1 mg	<i>E. coli</i>
RD172467100	Human	Meteorin-Like Protein	0.1 mg	<i>E. coli</i>
RD172505100	Human	Placenta-specific Gene 8 Protein	0.1 mg	<i>E. coli</i>
RD172134100	Human	ST2	0.1 mg	HEK293

» FEATURED PRODUCT: HUMAN CLUSTERIN HEK293

Clusterin (Apolipoprotein J, **ApoJ**) is a heterodimeric glycoprotein of 75-80 kDa. It is secreted in kidney, liver, prostate and predominantly in the brain. It is a major protein in physiological fluids including plasma, milk, urine, cerebrospinal fluid and semen.

Clusterin functions as an **extracellular chaperon** that **stabilizes stressed proteins** in a folding-competent state, **in soluble complexes**, thus preventing their deposition.

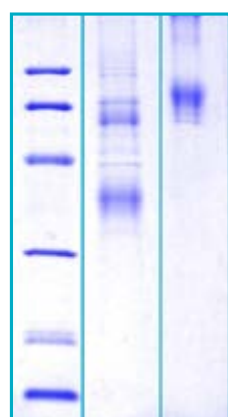
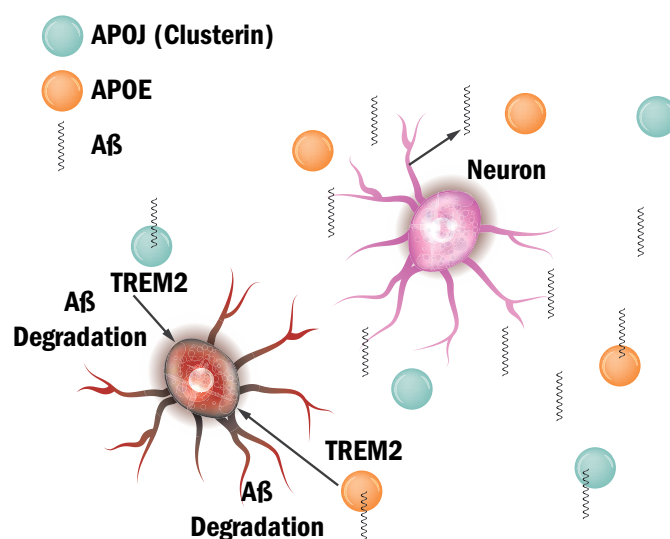
Clusterin is involved in including sperm maturation, membrane recycling, lipid transportation, tissue remodelling, complement inhibition and cell-cell or cell-substratum interactions.

Elevated Clusterin levels in serum may represent a strong indication of vascular damage. Clusterin is induced in kidney **degenerative diseases, prostate and vesicle carcinogenesis, ovarian cancer, several neurodegenerative conditions** (Alzheimer's disease), in **T2DM** patients and in patients with developing **coronary heart disease, or myocardial infarction**.

In **Alzheimer disease**, Clusterin levels are highly elevated. Clusterin tends to co-localize with Amyloid β , prevents $A\beta$ aggregation and exhibits neuroprotective effects.

BioVendor produces recombinant Human Clusterin/ApoJ in HEK293 cell line. The protein contains 438 AA. MW: 51.27 kDa (calculated).

The AA sequence (AA 1-427) is identical to Swiss-Prot-P10909 (AA 23-449, secreted Human Clusterin). C-terminal Flag-tag, 11 extra AA. Protein identity confirmed by LC-MS/MS. Endotoxin-free.



12% SDS-PAGE separation of Human Clusterin:

1. M.W. marker – 14, 21, 31, 45, 66, 97 kDa
2. reduced and heated sample, 5µg/lane
3. non-reduced and non-heated sample, 5µg/lane

See more about IGFBP-2
[Clusterin Human HEK293](#)

RELATED PRODUCTS

- [RD491034200R](#) Clusterin Canine ELISA
- [RD194034200R](#) Clusterin Human ELISA
- [RD391034200CS](#) Clusterin Rat ELISA
- [RD472034100](#) Clusterin Canine *E. coli*
- [RD472034100-HEK](#) Clusterin Canine HEK293
- [RD172034100-S](#) Clusterin Human NATIVE, Human Plasma
- [RD372034100](#) Clusterin Rat *E. coli*
- [RD481034100](#) Clusterin Canine, Rabbit Polyclonal Antibody
- [RD484034100](#) Clusterin Canine, Sheep Polyclonal Antibody
- [RD182034110-H3](#) Clusterin Human, Mouse Monoclonal Antibody, Clone: Hs-3
- [RD381034100](#) Clusterin Rat, Rabbit Polyclonal Antibody

NEW ANTIBODIES

CAT. NO.		PRODUCT	REACTIVE SP.	SIZE
RD182080100C1-01	Anti-Human	COMP	Mouse Monoclonal Antibody, Clone: 17C10	0.1 mg
RD182080100F1-01	Anti-Human	COMP	Mouse Monoclonal Antibody, Clone: 16F12	0.1 mg

» FEATURED PRODUCTS: ANTI-HUMAN COMP MOUSE MONOCLONAL ANTIBODIES

Innovated versions of **highly popular with customers** mouse MAb anti-human COMP, clones **17C10** and **16F12** are newly **produced *in vitro*** and isolated from cell culture supernatant.

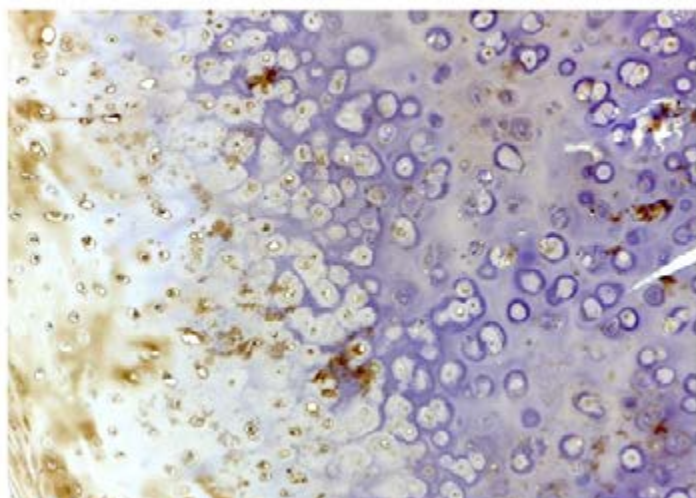
Cartilage oligomeric matrix protein (COMP) is present in the extracellular matrix of articular, nasal and tracheal cartilage. COMP was also found widely in other tissues. COMP molecules are important for maintaining the properties and integrity of collagen network.

Serum levels of COMP provide important information about metabolic changes occurring in the cartilage matrix in joint disease and correlate with cartilage degradation. Serum COMP is a potential prognostic marker in **osteoarthritis** and **rheumatoid arthritis**.

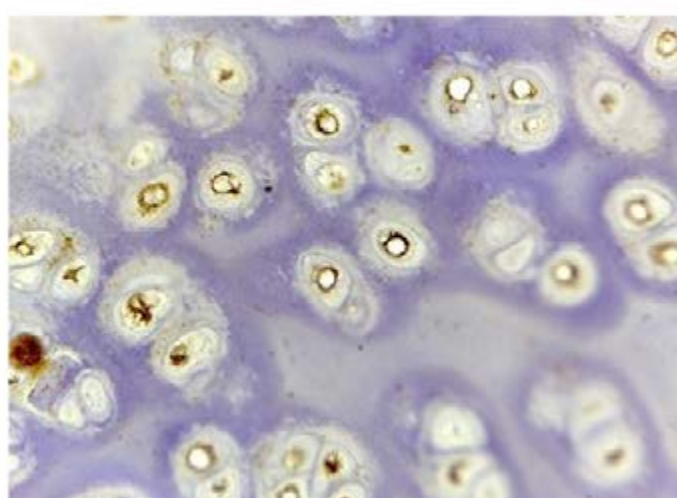
Recently, COMP has been proposed as a novel marker in **breast cancer** and **hepato-cellular carcinoma**.

See more about [COMP Human Mouse MAb, Clone: 17C10](#) or [COMP Human Mouse MAb, Clone: 16F12](#)

IHC-P: COMP 17C10 Antibody (RD182080100C1), 10x magnified



IHC-P: COMP 17C10 Antibody (RD182080100C1), 40x magnified



Immunohistochemical staining of formalin-fixed paraffin-embedded human cartilage using RD182080100C1 (Cartilage Oligomeric Matrix Protein (COMP) Human, Mouse Monoclonal Antibody, Clone: 17C10) at concentration of 2 µg/ml (original magnification, 10x and 40x). Detection DAB. Focal positivity of the mature chondrocytes.

Applications: Western blotting, ELISA, Immunohistochemistry

RELATED PRODUCTS

[RD194080200](#) Cartilage Oligomeric Matrix Protein Human ELISA

[RD172080100](#) Cartilage Oligomeric Matrix Protein Human HEK293

[RD182080100C4](#) Cartilage Oligomeric Matrix Protein Human, Mouse Monoclonal Antibody, Clone: 12C4