

PRODUCT DATASHEET

sPLA2-X Human E. coli

Cat. No.: RD172065100

Type: Recombinant protein

Size: 0.1 mg

Source: E. coli

Species: Human

Description

Total 139 AA. MW: 15.5 kDa (calculated). UniProtKB acc.no. O15496. N-Terminal His-tag, 16 extra AA (highlighted).

Other names

Group 10 secretory phospholipase A2, Group X secretory phospholipase A2, GX sPLA2, Phosphatidylcholine 2-acylhydrolase 10, PLA2G10

Introduction to the molecule

Research topic

Animal studies

Amino Acid sequence

MRGSHHHHHH GMASHMGILE LAGTVGCVGP RTPIAYMKYG CFCGLGGHGQ PRDAIDWCCH GHDCCYTRAE EAGCSPKTER YSWQCVNQSV LCGPAENKCQ ELLCKCDQEI ANCLAQTEYN LKYLFPQFL CEPDSPKCD

Purity

>95%

Endotoxin

< 0.1 EU/μg

Formulation:

Filtered (0.4 μm) and lyophilized in 0.5 mg/mL in 20mM TRIS, 50mM NaCl, pH 7.5

Reconstituion:

Add deionized water to prepare a working stock solution of approximately 0.5 mg/mL and let the lyophilized pellet dissolve completely. Filter sterilize your culture media/working solutions containing this non-sterile product before using in cell culture.

Shipping

At ambient temperature. Upon receipt, store the product at the temperature recommended below.

Storage, Stability/Shelf Life

Store the lyophilized protein at $-80\text{ }^{\circ}\text{C}$. Lyophilized protein remains stable until the expiry date when stored at $-80\text{ }^{\circ}\text{C}$. Aliquot reconstituted protein to avoid repeated freezing/thawing cycles and store at $-80\text{ }^{\circ}\text{C}$ for long term storage. Reconstituted protein can be stored at $4\text{ }^{\circ}\text{C}$ for a week.

Quality control

BCA to determine quantity of the protein.

SDS PAGE to determine purity of the protein.

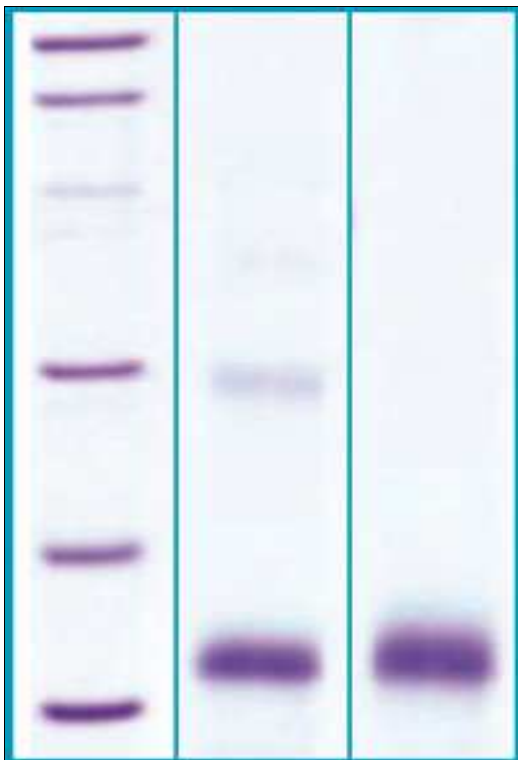
LAL to determine quantity of endotoxin.

Applications

Western blotting

Note

This product is intended for research use only.



12% SDS-PAGE separation of Human sPLA2-X

1. M.W. marker – 14, 21, 31, 45, 66, 97 kDa
2. reduced and heated sample, $5\mu\text{g/lane}$
3. non-reduced and non-heated sample, $5\mu\text{g/lane}$