

PRODUCT DATASHEET

IL-34 Human E. coli

Cat. No.: RD172476025

Type: Recombinant protein

Size: 0.025 mg

Source: E. coli

Species: Human

Description

Total 232 AA. MW: 26.5 kDa (calculated). UniProtKB acc. no. Q6ZMJ4 (Asn21-Pro242). N-terminal His-tag (10 extra AA). Protein identity confirmed by LC-MS/MS.

Other names

C16orf77

Introduction to the molecule

Research topic

Animal studies, Bone and cartilage metabolism, Immune Response, Infection and Inflammation, Oncology

Amino Acid sequence

MKHHHHHHAS NEPLEMWPLT QNEECTVTGF LRDKLQYRSR LQYMKHYFPI NYKISVPYEG VFRIANVTRL QRAQVSEREL RYLWVLVSL
ATESVQDVLL EGHPSWKYLQ EVETLLLNQV QGLTDVEVSP KVESVLSLLN APGPNLKLVR PKALLDNCFR VMELLYCSCC KQSSVLNWQD
CEVPSPQSCS PEPSLQYAAT QLYPPPPWSP SSPPHSTGSV RPYRAQGEGL LP

Purity

Purity as determined by densitometric image analysis: > 95%

Endotoxin

< 0.1 EU/μg

Formulation:

Filtered (0.4 μm) and lyophilized from 0.5 mg/ml solution in 20 mM Tris buffer, 50 mM NaCl, 5% trehalose, 1mM DTT, pH 7.5.

Reconstitution:

Add deionized water to prepare a working stock solution of approximately 0.5 mg/ml and let the lyophilized pellet dissolve completely.

Shipping

At ambient temperature. Upon receipt, store the product at the temperature recommended below.

Storage, Stability/Shelf Life

Store lyophilized protein at -80°C . Lyophilized protein remains stable until the expiry date when stored at -80°C . Aliquot reconstituted protein to avoid repeated freezing/thawing cycles and store at -80°C for long term storage. Reconstituted protein can be stored at 4°C for a week.

Quality control

Bradford protein assay to determine quantity of the protein.

SDS-PAGE to determine purity of the protein.

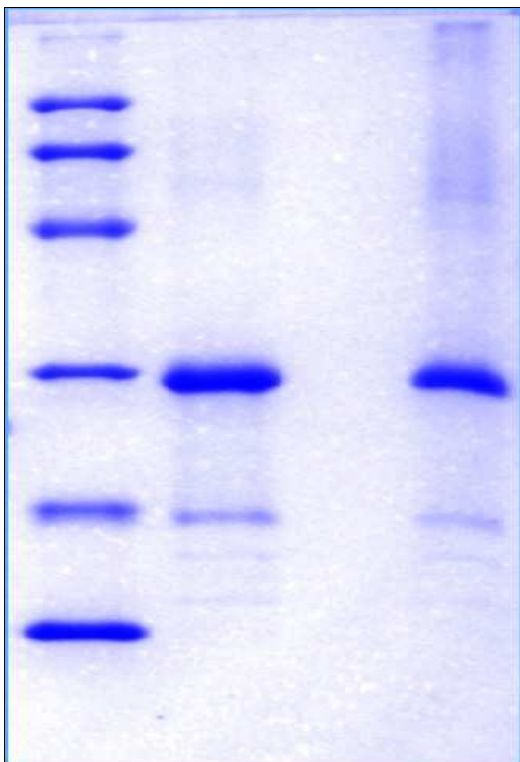
LAL TEST to determine endotoxin level.

Applications

ELISA, Western blotting

Note

This product is intended for research use only.



14 % SDS-PAGE separation of Human IL-34:

1. M.W. marker – 14, 21, 31, 45, 66, 97 kDa

2. Reduced and boiled sample, 2.5 $\mu\text{g}/\text{lane}$

3. Non-reduced and non-boiled sample, 2.5 $\mu\text{g}/\text{lane}$