

## PRODUCT DATASHEET

### GDNF Family Receptor Alpha-1 Human HEK293

**Cat. No.:** RD172495100

**Type:** Recombinant protein

**Size:** 0.1 mg

**Source:** HEK293

**Species:** Human

#### Description

Total 409 AA. MW: 46.0 kDa (calculated). UniProtKB acc. No. P56159 (Isoform 2, Asp25–Ser423). C-terminal His-tag (10 extra AA). Protein identity confirmed by LC-MS/MS.

#### Other names

GDNF receptor alpha-1, GDNFR-alpha-1, GFR-alpha-1, RET ligand 1, TGF-beta-related neurotrophic factor receptor 1, GDNFRA1, RET1L2, RETL1, Glial Cell Line-Derived Neurotrophic Factor Receptor Alpha, TRNR1, GPI-Linked Anchor Protein, PI-Linked Cell-Surface

#### Introduction to the molecule

#### Research topic

Animal studies

#### Amino Acid sequence

DRLDCVKASD QCLKEQSCST KYRTLRCQVA GKETNFSLAS GLEAKDECRS AMEALKQKSL YNCRCKRGMK KEKNCLRIYW  
SMYQSLQGND LLEDSPYEPV NSRLSDIFRV VPFISVEHIP KGNNCLDAK ACNLDDICKK YRSAYITPCT TSVSNDVCNR  
RKCHKALRQF FDKVPAKHSY GMLFCSCRDI ACTERRRQTI VPVCSYEERE KPNCLNLQDS CKTNYICRSR LADFFTNCQP  
ESRSVSSCLK ENYADCLLAY SGLIGTVMTN NYIDSSSLSV APWCDCSNSG NDLEECLKFL NFFKDNTCLK NAIQAFGNGS  
DVTWVQPAFP VQTTTATTTT ALRVKNKPLG PAGSENEIPT HVLPPCANLQ AQKLKSNVSG NTHLCISNGN YEKEGLGASH  
HHHHHHHHHH

#### Purity

Purity as determined by densitometric image analysis: >95%

#### Endotoxin

< 0.1 EU/μg

#### Formulation:

Filtered (0.4 μm) and lyophilized from 0.5 mg/ml solution in phosphate buffered saline pH 7.5 containing 5 % (w/v) trehalose.

#### Reconstitution:

Add 200 μl of deionized water to prepare a working stock solution of approximately 0.5 mg/ml and let the lyophilized pellet dissolve completely. Filter sterilize your culture media/working solutions containing this non-sterile product before using in cell culture.

### Shipping

At ambient temperature. Upon receipt, store the product at the temperature recommended below.

### Storage, Stability/Shelf Life

Store the lyophilized protein at  $-80^{\circ}\text{C}$ . Lyophilized protein remains stable until the expiry date when stored at  $-80^{\circ}\text{C}$ . Aliquot reconstituted protein to avoid repeated freezing/thawing cycles and store at  $-80^{\circ}\text{C}$  for long term storage. Reconstituted protein can be stored at  $4^{\circ}\text{C}$  for a week.

### Quality control

BCA to determine quantity of the protein.

SDS PAGE to determine purity of the protein.

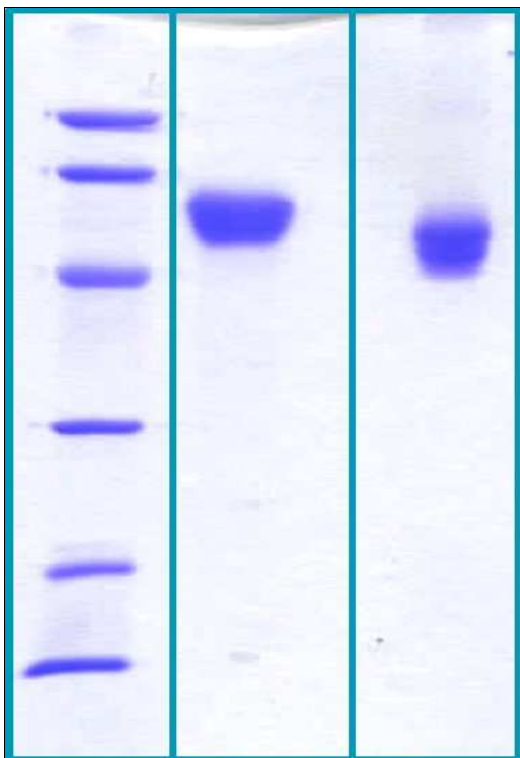
LAL to determine quantity of endotoxin.

### Applications

Cell culture and/or animal studies, ELISA, Western blotting

### Note

This product is intended for research use only.



12 % SDS-PAGE separation of Human GDNFR Human (HEK)

1. M.W. marker – 14, 21, 31, 45, 66, 97 kDa

2. Reduced and boiled sample, 2.5  $\mu\text{g}/\text{lane}$

3. Non-reduced and non-boiled sample, 2.5  $\mu\text{g}/\text{lane}$