

## PRODUCT DATASHEET

### Soluble Receptor for Advanced Glycation End Products (sRAGE) Mouse HEK293

**Cat. No.:** RD272590100

**Type:** Recombinant protein

**Size:** 0.1 mg

**Source:** HEK293

**Species:** Mouse

#### Description

Total 317 AA. MW 34.0 kDa (calculated). UniProtKB acc. No. Q62151-2 Isoform 2 secreted (Gly23–Asp333). C-terminal His-tag (6 extra AA). Protein identity confirmed by LC-MS/MS.

#### Other names

Soluble Receptor for Advanced Glycation End Products, sRAGE, Advanced glycation end product-specific receptor, AGER, RAGE

#### Introduction to the molecule

The receptor for advanced glycation end products (RAGE) is a multiligand member of the immunoglobulin superfamily of cell surface molecules. It mediates interactions of advanced glycation end products (AGE), the products of nonenzymatic glycoxidation of proteins/lipids that accumulate in the plasma and tissues of patients with diabetes.

#### Research topic

Animal studies, Diabetology - Other Relevant Products, Neural tissue markers, Pulmonary diseases, Renal disease

#### Amino Acid sequence

GQNITARIGE PLVLSCKGAP KKPPQQLEWK LNTGRTEAWK VLSPQGGPWD SVARILPNGS LLLPATGIVD EGTFRCRATN  
RRGKEVKSNY RVRVYQIPGK PEIVDPASEL TASVPNKVGT CVSEGSYPAG TLSWHLDGKL LIPDGKETLV KEETRRHPET  
GLFTLRSELT VIPTQGGTHP TFSCSFSGLG PRRRPLNTAP IQLRVREPGP PEGIQLLVEP EGGIVAPGGT VTLTCAISAQ  
PPPQVHWIKD GAPLPLAPSP VLLLPEVGHE DEGTYSVCVAT HPSHGPQESP PVSIRVTETG DEGPAEGEGL DHHHHHHH

#### Purity

Purity as determined by densitometric image analysis: > 95%

#### Endotoxin

< 0.1 EU/μg

#### Formulation:

Filtered (0.4 μm) and lyophilized from 0.5 mg/ml solution in phosphate buffered saline, pH 7.4.

#### Reconstitution:

Add deionized water to prepare a working stock solution of approximately 0.5 mg/ml and let the lyophilized pellet dissolve completely.

#### Shipping

At ambient temperature. Upon receipt, store the product at the temperature recommended below.

**Storage, Stability/Shelf Life**

Store the lyophilized protein at  $-80^{\circ}\text{C}$ . Lyophilized protein remains stable until the expiry date when stored at  $-80^{\circ}\text{C}$ . Aliquot reconstituted protein to avoid repeated freezing/thawing cycles and store at  $-80^{\circ}\text{C}$  for long term storage. Reconstituted protein can be stored at  $4^{\circ}\text{C}$  for a week.

**Quality control**

BCA to determine quantity of the protein.

SDS PAGE to determine purity of the protein.

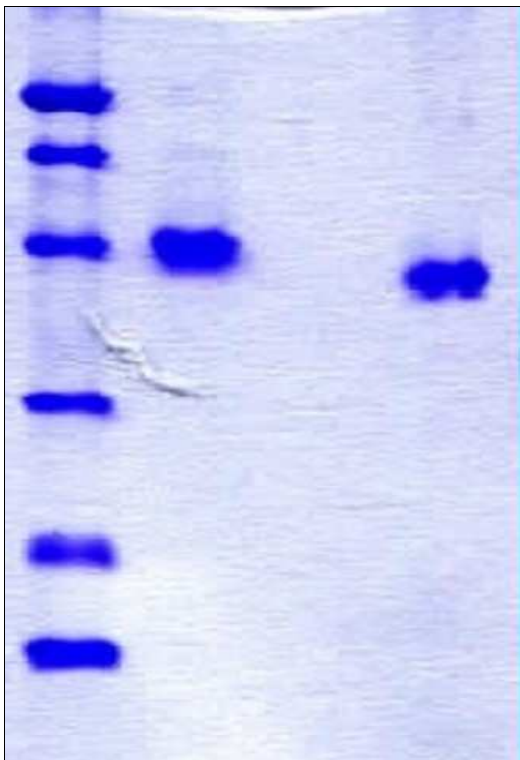
LAL to determine quantity of endotoxin.

**Applications**

Cell culture and/or animal studies, ELISA, Western blotting

**Note**

This product is intended for research use only.



14 % SDS-PAGE separation of Mouse sRAGE:

1. M.W. marker – 14, 21, 31, 45, 66, 97 kDa
2. Reduced and boiled sample, 2.5  $\mu\text{g}$ /lane
3. Non-reduced and non-boiled sample, 2.5  $\mu\text{g}$ /lane