

PRODUCT DATASHEET

ENPP1 Protein Mouse HEK293

Cat. No.: RD275597025

Type: Recombinant protein

Size: 0.025 mg

Source: HEK293

Species: Mouse

Description

Total 828 AA. MW 95.2 kDa (calculated). UniProtKB acc. no. P06802 (Lys85-Glu906). C-terminal his-tag (6 extra AA). Protein identity confirmed by LC-MS/MS.

Other names

Ectonucleotide pyrophosphatase/phosphodiesterase family member 1, E-NPP 1, Membrane component chromosome 6 surface marker 1, Phosphodiesterase I/nucleotide pyrophosphatase 1, NPP-1, Plasma-cell membrane glycoprotein, PC-1

Introduction to the molecule

Research topic

Animal studies, Bone and cartilage metabolism, Diabetology - Other Relevant Products, Energy metabolism and body weight regulation

Amino Acid sequence

KEVKSCKGRC FERTFSNCRD AACVSLGNC CLDFQETCVE PTHIWTCNKF RCGEKRLSRF VCSCADDCKT HNDCCINYSS VCQDKKSWVE ETCESIDTPE CPAEFESPT LFLSLDGFR A EYLHTWGGLL PVISKLKNCG TYTKNMRPMY PTKTFPNHYS IVTGLYPESH GIIDNKMYDP KMNASFSLKS KEKFNPLWYK GQPIWVTANH QEVKSGTYFW PGSDVEIDGI LPDIYKVYNG SVPFEERILA VLEWLQLPSH ERPHFYTYL EEPDSSGHS GPVSSEVIKA LQKVDRLVGM LMDGLKDLGL DKCLNLILIS DHGMEQGSC KYVYLNKYL DVNNVKVY G PAARLRPTDV PETYYSFNYE ALAKNLSCRE PNQHFRLPYLK PFLPKRLHFA KSDRIEPLTF YLDPQWQLAL NPSEKCYCGS GFHGSDNLS NMQALFIGYG PAFKHGAEVD SFENIEVYNL MCDLLGLIPA PNNGSHGSLN HLLKKPIYNP SHPKKEGFLS QCPIKSTSND LGCTCDPWIV PIKDFEKQLN LTTEDVDDIY HMTVPYGRPR ILLKQHHVCL LQQQQFLTGY SLDLLMPLWA SYTFLRNDQF SRDDFSNCLY QDLRIPLSPV HKCSYYSNS KLSYGFLTPP RLNRVSNHY SEALLTSNIV PMYQSFQVIW HYLHDTLLQR YAHERNGINV VSGPVDFDY DGRYDSLEIL KQNSRVIRSQ EILIPTHFFI VLTSCQQLSE TPLECSALES SAYILPHRPD NIESCTHGKR ESSWVEELLT LHRARVTDVE LITGLSFYQD RQESVSELLR LKTHLPFSQ EDHHHHHH

Purity

Purity as determined by densitometric image analysis: > 95%

Endotoxin

< 0.1 EU/μg

Formulation:

Filtered (0.4 μm) and lyophilized from 0.5 mg/ml solution in phosphate buffered saline, pH 7.5.

Reconstitution:

Add deionized water to prepare a working stock solution of approximately 0.5 mg/ml and let the lyophilized pellet dissolve completely.

Shipping

At ambient temperature. Upon receipt, store the product at the temperature recommended below.

Storage, Stability/Shelf Life

Store protein at -80°C . Protein remains stable until the expiry date when stored at -80°C . Avoid repeated freezing/thawing cycles. The thawed protein can be stored at 4°C for three days.

Quality control

BCA to determine quantity of the protein.

SDS PAGE to determine purity of the protein.

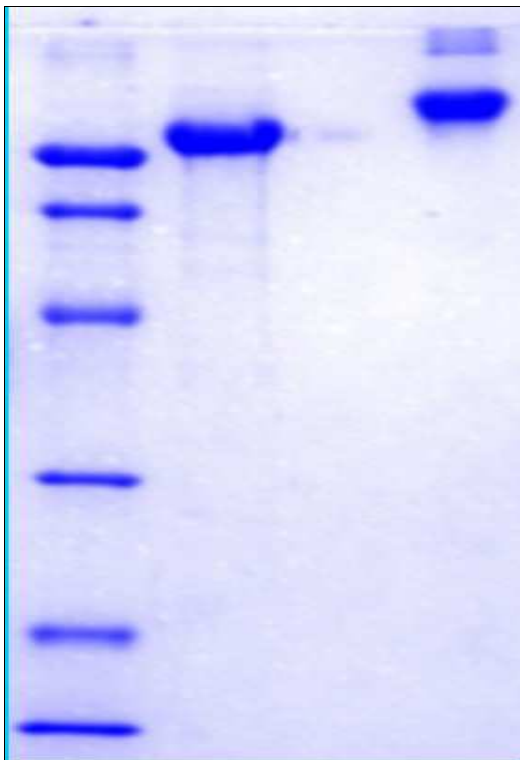
LAL to determine quantity of endotoxin.

Applications

ELISA, Western blotting

Note

This product is intended for research use only.



12 % SDS-PAGE separation of Mouse ENPP1:

1. M.W. marker – 14, 21, 31, 45, 66, 97 kDa
2. Reduced and boiled sample, 2.5 $\mu\text{g}/\text{lane}$
3. Non-reduced and non-boiled sample, 2.5 $\mu\text{g}/\text{lane}$