

PRODUCT DATASHEET

Metadherin Human E. coli

Cat. No.: RD172457100

Type: Recombinant protein

Size: 0.1 mg

Source: E. coli

Species: Human

Description

Total 196 AA. MW: 21.5 kDa (calculated). UniProtKB acc.no. Q86UE4 (Val271-Asn456). N-terminal his-tag (10 extra AA). Protein identity confirmed by LC-MS/MS.

Other names

LYRIC, 3D3/LYRIC, Astrocyte elevated gene-1 protein, AEG-1, Lysine-rich CEACAM1 co-isolated protein, Metastasis adhesion protein, MTDH, AEG1

Introduction to the molecule

Research topic

Animal studies

Amino Acid sequence

MKHHHHHHHAS VSSGLNENLT VNGGGWNEKS VKLSSQISAG EEKWNSVSPA SAGKRKAEPS AWSQDTGDAN TNGKDWGRSW
SDRSIFSGIG STAEPVSQST TSDYQWDVSR NQPYIDDEWS GLNGLSSADP NSDWNAPAE E WGNWVDEERA SLLKSQEP
DDQKVSDDDK EKGEALPTG KSKKKKKKKK KQGEDN

Purity

Purity as determined by densitometric image analysis: > 90%

Endotoxin

< 0.1 EU/μg

Formulation:

Filtered (0.4 μm) and lyophilized in 20 mM Tris buffer, 50 mM NaCl, pH 7.5.

Reconstitution:

Add deionized water to prepare a working stock solution of approximately 0.5 mg/ml and let the lyophilized pellet dissolve completely. Filter sterilize your culture media/working solutions containing this non-sterile product before using in cell culture.

Shipping

At ambient temperature. Upon receipt, store the product at the temperature recommended below.

Storage, Stability/Shelf Life

Store the lyophilized protein at -80°C . Lyophilized protein remains stable until the expiry date when stored at -80°C . Aliquot reconstituted protein to avoid repeated freezing/thawing cycles and store at -80°C for long term storage. Reconstituted protein can be stored at 4°C for a week.

Quality control

BCA to determine quantity of the protein.

SDS PAGE to determine purity of the protein.

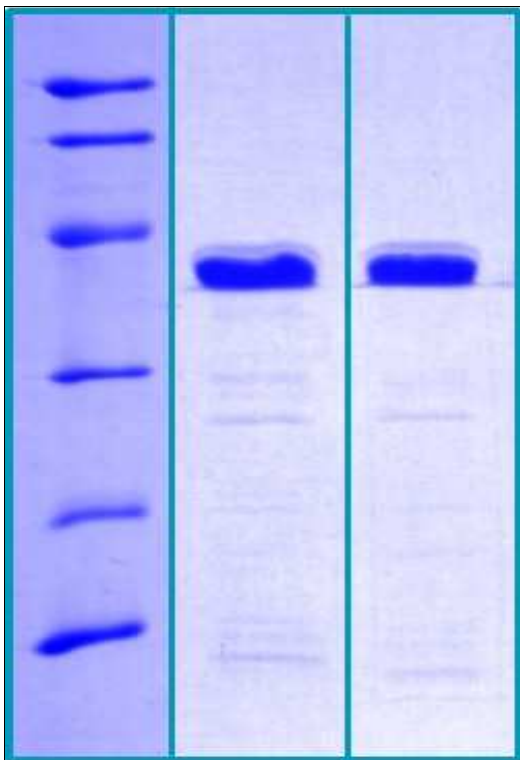
LAL to determine quantity of endotoxin.

Applications

ELISA, Western blotting

Note

This product is intended for research use only.



14 % SDS-PAGE separation of Human Metadherin (E.coli):

1. M.W. marker – 14, 21, 31, 45, 66, 97 kDa
2. Reduced and boiled sample, 2.5 μg /lane
3. Non-reduced and non-boiled sample, 2.5 μg /lane