

PRODUCT DATASHEET

Betatrophin Human E. coli

Cat. No.: RD172347100

Type: Recombinant protein

Size: 0.1 mg

Source: E. coli

Species: Human

Description

Total 187 AA. MW: 21.1 kDa (calculated). UniProtKB acc.no. Q6UXH0 (Ala22-Ala198). N-terminal His-tag (10 extra AA). Protein identity confirmed by LC-MS/MS.

Other names

RIFL, Hepatocellular carcinoma-associated protein TD26, C19orf80, UNQ599/PRO1185, Lipasin, Angiopoietin-like protein 8, ANGPTL-8, ANGPTL 8, ANGPTL8

Introduction to the molecule

Lipasin (RIFL) is an important new regulator of lipid metabolism that regulates serum triglyceride levels. It is a member of ANGPTL protein family.

Research topic

Animal studies, Diabetology - Other Relevant Products, Energy metabolism and body weight regulation, Lipoprotein metabolism

Amino Acid sequence

MKHHHHHHHAS APMGGPELAQ HEELTLFFHG TLQLGQALNG VYRTTEGRLT KARNSLGLYG RTIELLGQEV SRGRDAAQEL
RASLLETQME EDILQLQAEA TAEVLGEVAQ AQKVL RDSVQ RLEVQLRSAW LGPAYREFEV LKAHADKQSH ILWALTGHVQ
RQRREMVAQQ HRLRQIQERL HTAALPA

Purity

Purity as determined by densitometric image analysis: > 95 %

Endotoxin

< 0.1 EU/μg

Formulation:

Filtered (0.4 μm) and lyophilized in 0.5 mg/mL in 0.05M Acetate buffer pH 4.0

Reconstitution:

Add 0.1 M Acetate buffer pH4 to prepare a working stock solution of approximately 0.5 mg/mL and let the lyophilized pellet dissolve completely. For conversion into higher pH value, we recommend intensive dilution by relevant buffer to a concentration of 10 μg/mL. In higher concentrations the solubility of this antigen is limited. Product is not sterile! Please filter the product by an appropriate sterile filter before using it in the cell culture.

Shipping

At ambient temperature. Upon receipt, store the product at the temperature recommended below.

Storage, Stability/Shelf Life

Store the lyophilized protein at -80°C . Lyophilized protein remains stable until the expiry date when stored at -80°C . Aliquot reconstituted protein to avoid repeated freezing/thawing cycles and store at -80°C for long term storage. Reconstituted protein can be stored at 4°C for a week.

Quality control

BCA to determine quantity of the protein.

SDS PAGE to determine purity of the protein.

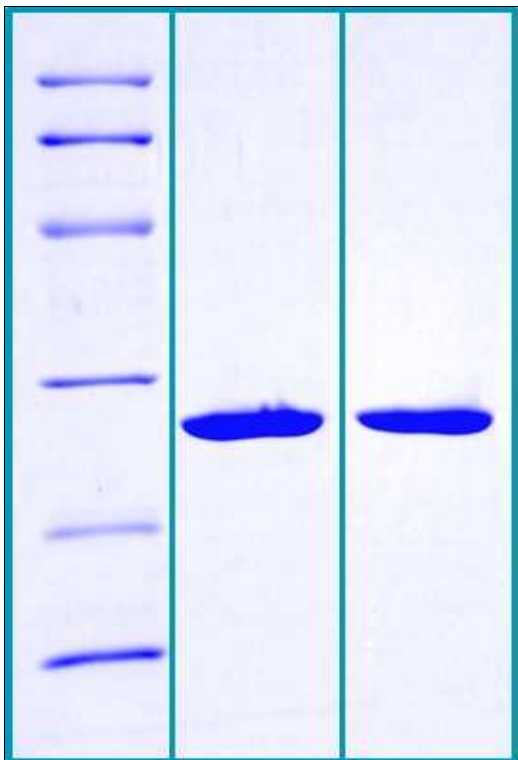
LAL to determine quantity of endotoxin.

Applications

ELISA, Western blotting

Note

This product is intended for research use only.



14% SDS-PAGE separation of Hu Betatrophin:

1. M.W. marker – 97, 66, 45, 31, 21, 14 kDa
2. reduced and heated sample, $2.5\mu\text{g}/\text{lane}$
3. non-reduced and non-heated sample, $2.5\mu\text{g}/\text{lane}$