

PRODUCT DATASHEET

CTRP6 Human E. coli

Cat. No.: RD172156100
Type: Recombinant protein
Size: 0.1 mg
Source: E. coli
Species: Human

Description

Total 242 AA. MW: 27.02 kDa (calculated). UniProtKB acc.no. Q9BXI9. N-terminal His-tag, 10extra AA (highlighted).

Other names

C1QTNF6, CTRP6, UNQ581/PRO1151

Introduction to the molecule

Research topic

Animal studies, Energy metabolism and body weight regulation

Amino Acid sequence

MKHHHHHHAS TFDRAVASGC QRCCDSEDPL DPAHVSSASS SGRPHALPEI RPYINITILK GDKGDPGPMG LPGYMGREGP
QGEPGPQGSK GDKGEMGSPG APCQKRFFAF SVGRKTALHS GEDFQTLLE RVFVNLDGCF DMATGQFAAP LRGIYFFSLN
VHSWNYKETY VHIMHNQKEA VILYAQPSE SIMQSQSVML DLAYGDRVWV RLFKRQRENA IYSNDFDITYI TFSGLIKAE DD

Purity

Purity as determined by densitometric image analysis: > 95 %

Endotoxin

< 0.1 EU/μg

Formulation:

0.3 – 0.8 mg/ml in 0.05M acetate buffer, 5mM DTT pH=4.0 – filtered (0.4 μm), frozen

Reconstitution:

Defrost at ambient temperature. Filter sterilize your culture media/working solutions containing this non-sterile product before using in cell culture.

Shipping

On ice. Upon receipt, store the product at the temperature recommended below.

Storage, Stability/Shelf Life

Store protein at -80°C . Protein remains stable until the expiry date when stored at -80°C . Avoid repeated freezing/thawing cycles.

Quality control

Bradford protein assay to determine quantity of the protein.

SDS-PAGE to determine purity of the protein.

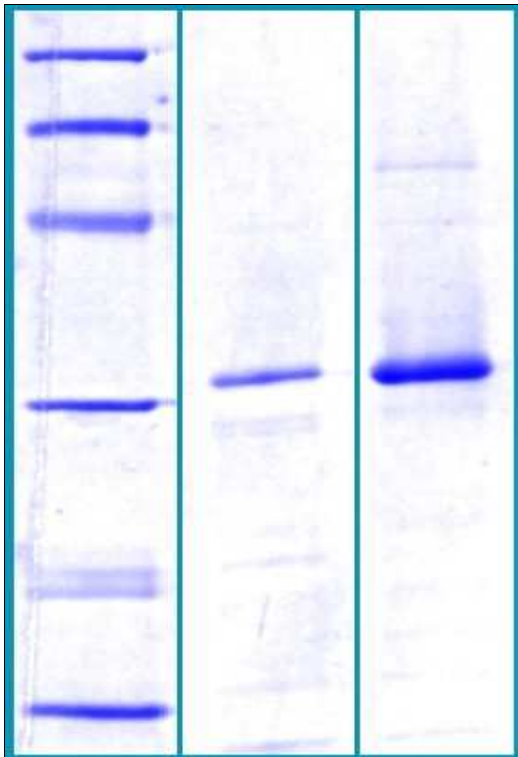
LAL TEST to determine endotoxin level.

Applications

ELISA, Western blotting

Note

This product is intended for research use only.



12% SDS-PAGE separation of Human CTRP6:

1. M.W. marker – 14, 21, 31, 45, 66, 97 kDa
2. non-reduced and non-heated sample, 2.5 μg / lane
3. reduced and heated sample, 2.5 μg / lane