

PRODUCT DATASHEET

CTRP8 Human E. coli

Cat. No.: RD172179100

Type: Recombinant protein

Size: 0.1 mg

Source: E. coli

Species: Human

Description

Total 255 AA. MW: 28,4 kDa (calculated). UniProtKB acc.no. P60827. N-Terminal His-tag, 10 extra AA (highlighted).

Other names

C1q/TNF-related protein 8, CTRP8, C1QTNF8, UNQ5829/PRO19648

Introduction to the molecule

Research topic

Animal studies, Energy metabolism and body weight regulation

Amino Acid sequence

MKHHHHHHHAS WPGLPRRPCV HCCRPAPWPPG PYARVSDRDL WRGDLWRGLP RVRPTIDIEI LKGEKGEAGV RGRAGRSGKE
GPPGARGLQG RRGQKGQVGP PGAACRRAYA AFSVGRRAYA AFSVGRREGL HSSDHFQAVP FDTLVNLDG AFDLAAGRFL
CTVPGVYFLS LNVHTWNYKE TYLHIMLNRR PAAVLYAQPS ERSVMAQSL MLLLAAGDAV WVRMFQRDRD NAIYGEHGDL
YITFSGHLVK PAAEL

Endotoxin

< 0.1 EU/μg

Formulation:

0.4 – 1.0 mg/ml in 0.03M acetate buffer, pH=4.0 – filtered (0.4 μm), frozen

Reconstitution:

Defrost at ambient temperature. For conversion into higher pH value, we recommend intensive dilution by relevant buffer to a concentration of 10 μg/mL. In higher concentrations the solubility of this antigen is limited. Filter sterilize your culture media/working solutions containing this non-sterile product before using in cell culture.

Shipping

On ice. Upon receipt, store the product at the temperature recommended below.

Storage, Stability/Shelf Life

Store protein at -80°C . Protein remains stable until the expiry date when stored at -80°C . Avoid repeated freezing/thawing cycles.

Quality control

BCA to determine quantity of the protein.

SDS PAGE to determine purity of the protein.

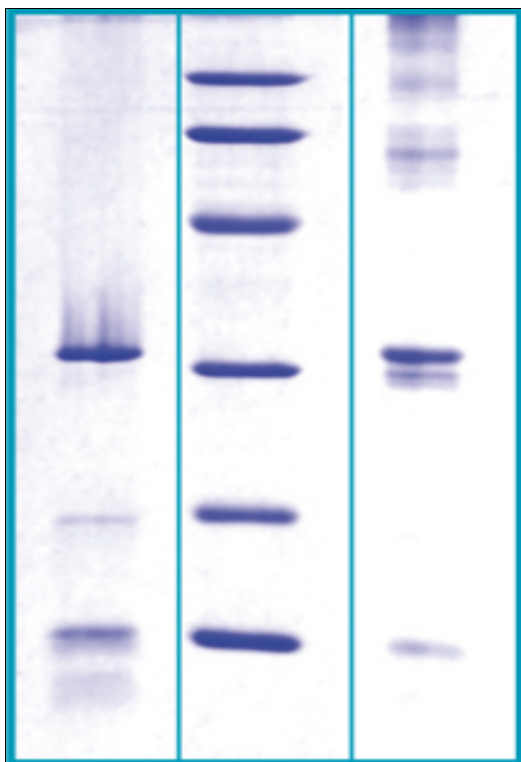
LAL to determine quantity of endotoxin.

Applications

Western blotting

Note

This product is intended for research use only.



14% SDS-PAGE separation of Human CTRP8

1. reduced and heated sample, $5\mu\text{g}$ / lane
2. M.W. marker – 14, 21, 31, 45, 66, 97 kDa
3. non-reduced and non-heated sample, $5\mu\text{g}$ / lane