

PRODUCT DATASHEET

Soluble Receptor for Advanced Glycation End Products Human E. coli

Cat. No.: RD172116100

Type: Recombinant protein

Size: 0.1 mg

Source: E. coli

Species: Human

Description

Total 339 AA. MW: 36.5 kDa. UniProtKB acc.no. Q15109. N-Terminal His-tag 14 AA (highlighted).

Other names

Soluble Receptor for Advanced Glycation End Products, sRAGE, Advanced glycation end product-specific receptor, AGER, RAGE

Introduction to the molecule

The receptor for advanced glycation end products (RAGE) is a multiligand member of the immunoglobulin superfamily of cell surface molecules. It mediates interactions of advanced glycation end products (AGE), the products of nonenzymatic glycoxidation of proteins/lipids that accumulate in the plasma and tissues of patients with diabetes.

Research topic

Animal studies, Diabetology - Other Relevant Products, Neural tissue markers, Pulmonary diseases, Renal disease

Amino Acid sequence

MRGSHHHHHH GMASQNTA RIGELPLVKC KGAPKKPPQR LEWKLNTGRT EAWKVLSPQG GGPWDSVARV LPNGSLFLPA
VGIQDEGIFR CQAMNRNGKE TKSNYRVRY QIPGKPEIVD SASELTAGVP NKVGTCVSEG SYPAGTLSWH LDGKPLVPNE
KGVSVKEQTR RHPETGLFTL QSELMVTPAR GGDPRPTFSC SFSPGLPRHR ALRTAPIQPR VWEVPVLEEV QLVVEPEGGA
VAPGGTVTLT CEVPAQPSQ IHWMKDGVPL PLPPSPVLIL PEIGPQDQGT YSCVATHSSH GPQESRAVSI SIIEPGEEGP
TAGEGFDKVR EAEDSPQHM

Purity

Purity as determined by densitometric image analysis: > 95%

Endotoxin

< 0.1 EU/μg

Formulation:

Filtered (0.4 μm) and lyophilized in 0.5 mg/mL in 0.03 M acetate buffer, pH=4.0

Reconstitution:

Add 0.1 M Acetate buffer pH4 to prepare a working stock solution of approximately 0.5 mg/mL and let the lyophilized pellet dissolve completely. For conversion into higher pH value, we recommend intensive dilution by relevant buffer to a concentration of 10 μg/mL. In higher concentrations the solubility of this antigen is limited. Filter sterilize your culture media/working solutions containing this non-sterile product before using in cell culture.

Shipping

At ambient temperature. Upon receipt, store the product at the temperature recommended below.

Storage, Stability/Shelf Life

Store the lyophilized protein at -80°C . Lyophilized protein remains stable until the expiry date when stored at -80°C . Aliquot reconstituted protein to avoid repeated freezing/thawing cycles and store at -80°C for long term storage. Reconstituted protein can be stored at 4°C for a week.

Quality control

BCA to determine quantity of the protein.

SDS PAGE to determine purity of the protein.

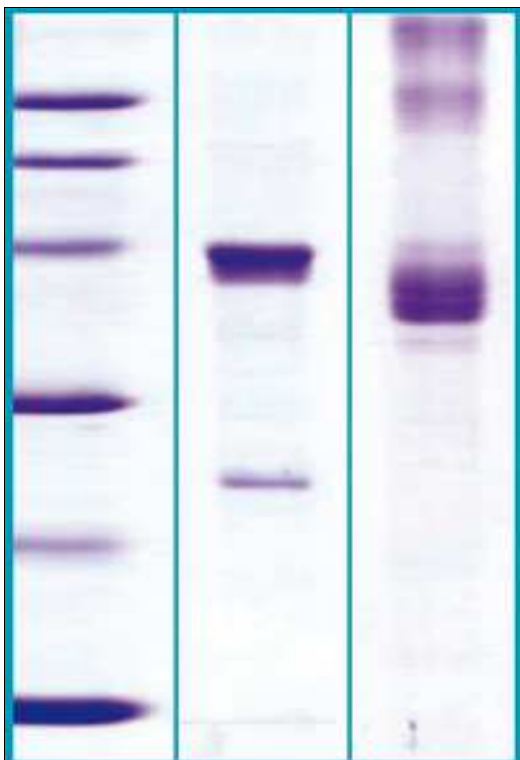
LAL to determine quantity of endotoxin.

Applications

ELISA, Western blotting

Note

This product is intended for research use only.



12% SDS-PAGE separation of Human sRAGE

1. M.W. marker – 14, 21, 31, 45, 66, 97 kDa

2. reduced and heated sample, 5 μg /lane

3. non-reduced and non-heated sample, 5 μg /lane