

## PRODUCT DATA SHEET

### Soluble Receptor for Advanced Glycation End Products (sRAGE) Human HEK293

**Cat. No.:** RD172116100-H01

**Type:** Recombinant protein

**Size** 0.1 mg

**Source:** HEK293

**Species:** Human

#### Description

Total 331 AA. MW 35.8 kDa (calculated). UniProtKB acc. No. Q15109-3 isoform 3 (Ala23–Met347). C-terminal His-tag (6 extra AA). Protein identity confirmed by LC-MS/MS.

**Other names:** Soluble Receptor for Advanced Glycation End Products, sRAGE, Advanced glycation end product-specific receptor, AGER, RAGE

#### Amino Acid Sequence

AQNITARIGE PLVLKCKGAP KKPPQRLEWK LNTGRTEAWK VLSPQGGGPW DSVARVLPNG  
SLFLPAVGIQ DEGIFRCQAM NRNGKETKSN YRVRVYQIPG KPEIVDSASE LTAGVPNKVG  
TCVSEGSYPA GTLSWHLDGK PLVPNEKGVV VKEQTRRHPE TGLFTLQSEL MVTPARGGDP  
RPTFSCSFSP GLPRHRALRT APIQPRVWEP VPLEEVQLVV EPEGGAVAPG GTVTLTCEVP  
AQPSPQIHWM KDGVPLPLPP SPVLILPEIG PQDQGTYSKV ATHSSHGPQE SRAVSIISIE  
PGEEGPTAGE GFDKVREAED SPQHMHMHHH H

#### Purity

Purity as determined by densitometric image analysis: > 95%

#### Endotoxin

< 1.0 EU/μg

#### Formulation

Filtered (0.4 μm) and lyophilized from a solution in phosphate buffered saline, pH 7.2

#### Reconstitution

Add deionized water to prepare a working stock solution of approximately 0.5 mg/ml and let the lyophilized pellet dissolve completely.

#### Shipping

At ambient temperature. Upon receipt, store the product at the temperature recommended below.

#### Storage/Stability

Store the lyophilized protein at –80 °C. Lyophilized protein remains stable until the expiry date when stored at –80 °C. Aliquot reconstituted protein to avoid repeated freezing/thawing cycles and store at –80 °C for long term storage. Reconstituted protein can be stored at 4 °C for a week.

### Quality Control

BCA to determine quantity of the protein.  
SDS PAGE to determine purity of the protein.  
LAL to determine quantity of endotoxin.

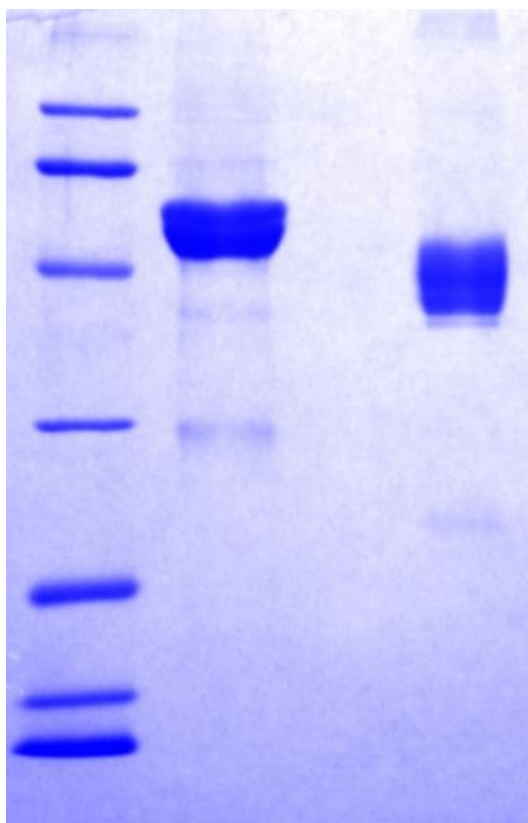
### Applications

ELISA, Western blotting

### Note

This product is for research use only.

### SDS-PAGE Gel



12% SDS-PAGE separation of Human sRAGE

1. MW marker – 6.5, 12.3, 21, 29, 45, 67, 97.4 kDa
2. reduced and heated sample, 2.5 µg / lane
3. nonreduced and nonheated sample, 2.5 µg / lane