

PRODUCT DATASHEET

FAM3A Human E. coli

Cat. No.: RD172301100

Type: Recombinant protein

Size: 0.1 mg

Source: E. coli

Species: Human

Description

Total 207 AA. MW: 23.1 kDa (calculated). N-Terminal His-tag (10 extra AA). UniprotKB acc.no. P98173. Protein identity confirmed by LC-MS/MS. Identification of recombinant FAM3A by LC-MS/MS.

Other names

Cytokine-like protein 2-19

Introduction to the molecule

Function of the FAM3A protein is unclear up to now. It belongs to the FAM3 family along with FAM3B (Pander) protein which induces apoptosis of pancreatic alpha and beta cells. FAM3A protein is expressed in almost all tissues.

Research topic

Animal studies, Others

Amino Acid sequence

MKHHHHHHAS FPRIQQLFTS PESSVTAAPR ARKYKCLPQ PCPEEHLAFR VVSGAANVIG PKICLEDKML MSSVKDENVGR GLNIALVNGV
SGELIEARAF DMWAGDVNDL LKFIRPLHEG TLVVFASYDD PATKMNEETR KLFSELGSRN AKELAFRDSW VFGAKGVQN KSPFEQHVKN
SKHSNKYEGW PEALEMEGCI PRRSTAS

Purity

Purity as determined by densitometric image analysis: > 95%

Endotoxin

< 0.1 EU/μg

Formulation:

Filtered (0.4 μm) and lyophilized from 0.5 mg/ml solution in 50 mM Tris buffer, pH 7.5, containing 0.1M arginine.

Reconstitution:

Add 200μl of deionized water to prepare a working stock solution of 0.5 mg/mL and let the lyophilized pellet dissolve completely. Product is not sterile! Please filter the product by an appropriate sterile filter before using it in the cell culture.

Shipping

At ambient temperature. Upon receipt, store the product at the temperature recommended below.

Storage, Stability/Shelf Life

Store the lyophilized protein at -80°C . Lyophilized protein remains stable until the expiry date when stored at -80°C . Aliquot reconstituted protein to avoid repeated freezing/thawing cycles and store at -80°C for long term storage. Reconstituted protein can be stored at 4°C for three days.

Quality control

Bradford protein assay to determine quantity of the protein.

SDS-PAGE to determine purity of the protein.

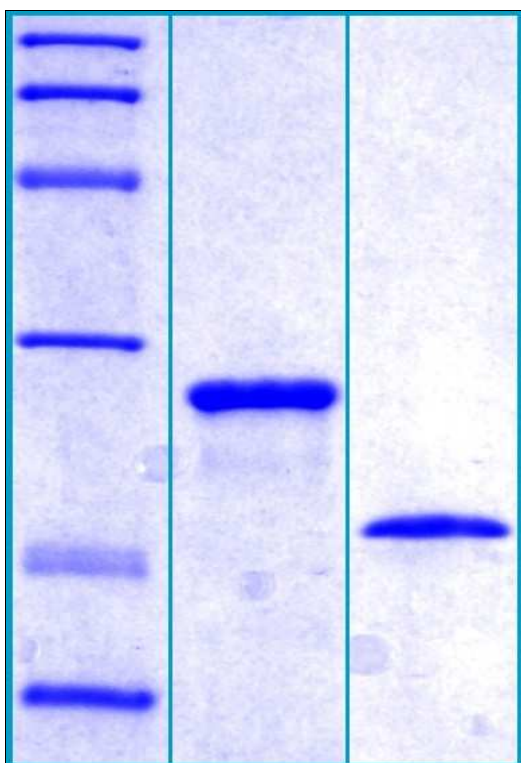
LAL TEST to determine endotoxin level.

Applications

ELISA, Western blotting

Note

This product is intended for research use only.



12% SDS-PAGE separation of Human FAM3A:

1. M.W. marker – 97, 66, 45, 31, 21, 14 kDa
2. reduced and boiled sample, $2.5\mu\text{g}$ / lane
3. non-reduced and non-boiled sample, $2.5\mu\text{g}$ / lane