

Betatrophin Rat E. coli

Product Data Sheet

Type: Recombinant

Source: E. coli

Species: Rat

Other names: RIFL, Hepatocellular carcinoma-associated protein TD26, C19orf80, UNQ599/PRO1185, Lipasin, Angiopoietin-like protein 8

Cat. No.:

RD372347100

(0.1 mg)

Description

Total 193 AA. MW: 22.0 kDa (calculated). Acc.no. NP_001258639 (Val16-Ala198). N-terminal His-tag (10 extra AA). Protein identity confirmed by LC-MS/MS.

Introduction to the Molecule

Lipasin (RIFL) is an important new regulator of lipid metabolism that regulates serum triglyceride levels. It is a member of ANGPTL protein family.

Amino Acid Sequence

MKHHHHHHS VRPAPVAPLG GPEPAQYEEL TLLFHGALQL GQALNGVYKA TEARLTEAGR NLGLFDQALE FLGREVNQGR
DATRELRTSL SEIQAEEDTL HLRAEATARS LREVARAQHA LRNSVRRLQV QLRGAWLGQA HQEFENLKDR ADKQNHLLWA
LTGHVQRQQR EMAEQQWLR QIQQLHMAA LPA

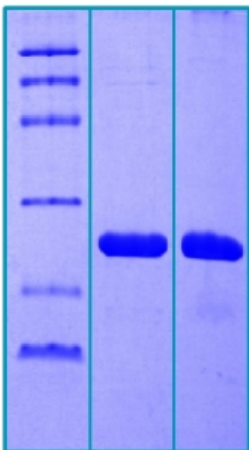
Source

E. coli

Purity

Purity as determined by densitometric image analysis: > 95%

SDS-PAGE gel



14 % SDS-PAGE separation of Rat Betatrophin:

1. M.W. marker - 14, 21, 31, 45, 66, 97 kDa
2. Reduced and boiled sample, 4 µg/lane
3. Non-reduced and non-boiled sample, 4 µg/lane

Endotoxin

< 1.0 EU/µg

Formulation

Filtered (0.4 µm) and lyophilized in 0.5 mg/mL in 0.03M Acetate buffer pH 4.0

Reconstitution

Add 0.1 M Acetate buffer pH4 to prepare a working stock solution of approximately 0.5 mg/mL and let the lyophilized pellet dissolve completely. For conversion into higher pH value, we recommend intensive dilution by relevant buffer to a

concentration of 10 µg/mL. In higher concentrations the solubility of this antigen is limited. Filter sterilize your culture media/working solutions containing this non-sterile product before using in cell culture.

Shipping

At ambient temperature. Upon receipt, store the product at the temperature recommended below.

Storage, Stability/Shelf Life

Store the lyophilized protein at -80 °C. Lyophilized protein remains stable until the expiry date when stored at -80 °C. Aliquot reconstituted protein to avoid repeated freezing/thawing cycles and store at -80 °C for long term storage. Reconstituted protein can be stored at 4 °C for a week.

Quality Control Test

BCA to determine quantity of the protein.

SDS-PAGE to determine purity of the protein.

LAL TEST to determine endotoxin level.

Applications

ELISA, Western blotting

Note

This product is intended for research use only.

HEADQUARTERS: BioVendor Laboratorní medicína, a.s.	Karasek 1767/1	621 00 Brno CZECH REPUBLIC	Phone: +420-549-124-185 Fax: +420-549-211-460	E-mail: info@biovendor.com sales@biovendor.com Web: www.biovendor.com
AUSTRIA: BioVendor GesmbH	Nußdorfer Straße 20/10	1090 Vienna AUSTRIA	Phone: +43-1-89090-25 Fax: +43-1-89090-2515	E-mail: infoAustria@biovendor.com
GERMANY, SWITZERLAND: BioVendor GmbH	Otto-Hahn-Straße 16	34123 Kassel GERMANY	Phone: +49-6221-433-9100 Fax: +49-6221-433-9111	E-mail: infoEU@biovendor.com
USA, CANADA AND MEXICO: BioVendor LLC	128 Bingham Rd. Suite 1300	Asheville, NC 28806 USA	Phone: +1-828-575-9250 +1-800-404-7807 Fax: +1-828-575-9251	E-mail: infoUSA@biovendor.com