

## Insulin-Degrading Enzyme Human E. coli

### Product Data Sheet

**Type:** Recombinant

**Source:** E. coli

**Species:** Human

**Other names:** Insulysin, Insulinase, Insulin protease

**Cat. No.:**

RD172201100

(0.1 mg)

### Description

Total 1026 AA. MW: 119.0 kDa (calculated). UniProtKB acc.no. P14735 (Met1-Leu1019). C-terminal His-tag (7 extra AA). Protein identity confirmed by LC-MS/MS.

### Amino Acid Sequence

MRYRLAWLLH PALPSTFRSV LGARLPPPER LCGFQKKTYS KMNNPAIKRI GNHITKSPED KREYRGLELA NGIKVLLISD  
PTTDKSSAAL DVHIGSLSDP PNIAGLSHFC EHMLFLGTTK YPKENEYSQF LSEHAGSSNA FTSGEHTNYY FDVSHEHLEG  
ALDRFAQFFL CPLFDESCKD REVNAVSEH EKNVMNDAWR LFQLEKATGN PKHPFSKFGT GNKYTLETRP NQEGIDVRQE  
LLKFHSAYYS SNLMAVCVLG RESLDDLTLN VVKLFSEVEN KNVPLPEFPE HPFQEEHLKQ LYKIVPIKDI RNLYVTFPIP  
DLQKYYKSNP GHYLGHLIGH EGPGLLSEL KSKGWVNTLV GGQKEGARGF MFFIINVDLT EGLLHVEDI ILHMFQYIQK  
LRAEGPQEWV FQECKDLNAV AFRFKDKERP RGYTSKIAGI LHYYPLEEVL TAEYLLLEFR PDLIEMVLDK LRPENVRVAI  
VSKSFEGKTD RTEEWYGTQY KQEAIPDEVI KKWQNADLNG KFKLPTKNEF IPTNFEILPL EKEATPYPAL IKDTAMSKLW  
FKQDDKFFLP KACLNFEEFFS PFAYVDPLHC NMAYLYLELL KDSLNEYAYA AELAGLSYDL QNTIYGMYS VKGYNDKQPI  
LLKKIIEKMA TFEIDKRFE IIKEAYMRSI NNFRAEQPHQ HAMYYLRLLM TEVAWTKDEL KEALDDVTLR RLKAFIPQLL  
SRLHIEALLH GNITKQAALG IMQMVEDTLI EHAHTKPLLP SQLVRYREVQ LPDRGWVYQ QRNEVHNNCG IEIYYQDMQ  
STSENMFLEL FCQIISEPCF NTLRRTKEQLG YIVFSGPARR NGIQGLRFII QSEKPPHYLE SRVEAFLITM EKSIEDMTEE  
AFQKHIQALA IRRLDKPKKL SAECAKYWGE IISQQYNFDR DNTEVAYLKT LTKEDIKIFY KEMLAVDAPR RHKVSVHVLVA  
REMDSCPVVG EFPQCNDINL SQAPALPQPE VIQNMTEFKR GLPLFPLVKP HINFMAAKL E HHHHHH

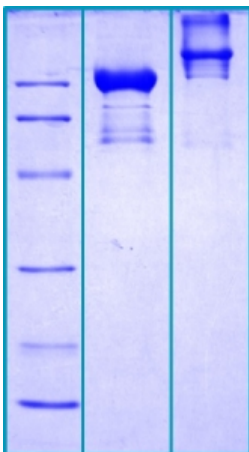
### Source

E. coli

### Purity

Purity as determined by densitometric image analysis: > 95%

### SDS-PAGE gel



12 % SDS-PAGE separation of Human IDE:

1. M.W. marker - 14, 21, 31, 45, 66, 97 kDa
2. Reduced and boiled sample, 2.5 µg/lane
3. Non-reduced and non-boiled sample, 2.5 µg/lane

### Endotoxin

< 1.0 EU/µg

### Formulation

0.25 - 0.60 mg/mL solution in 20 mM Tris buffer, 50 mM NaCl, pH 8.0, 10%(w/v) glycerol, filtered (0.4 µm), frozen

## Reconstitution

Defrost at ambient temperature. Filter sterilize your culture media/working solutions containing this non-sterile product before using in cell culture.

## Shipping

On ice. Upon receipt, store the product at the temperature recommended below.

## Storage, Stability/Shelf Life

Store protein at -80°C. Protein remains stable until the expiry date when stored at -80°C. Avoid repeated freezing/thawing cycles. The thawed protein can be stored at 4 °C for five days.

## Quality Control Test

BCA to determine quantity of the protein.  
SDS-PAGE to determine purity of the protein.  
LAL TEST to determine endotoxin level.

## Applications

ELISA, Western blotting

## Note

This product is intended for research use only.

<b>HEADQUARTERS:</b> BioVendor Laboratorní medicina, a.s.	Karasek 1767/1	621 00 Brno CZECH REPUBLIC	Phone: +420-549-124-185 Fax: +420-549-211-460	E-mail: info@biovendor.com sales@biovendor.com Web: www.biovendor.com
AUSTRIA: BioVendor GesmbH	Nußdorfer Straße 20/10	1090 Vienna AUSTRIA	Phone: +43-1-89090-25 Fax: +43-1-89090-2515	E-mail: infoAustria@biovendor.com
GERMANY, SWITZERLAND: BioVendor GmbH	Otto-Hahn-Straße 16	34123 Kassel GERMANY	Phone: +49-6221-433-9100 Fax: +49-6221-433-9111	E-mail: infoEU@biovendor.com
USA, CANADA AND MEXICO: BioVendor LLC	128 Bingham Rd. Suite 1300	Asheville, NC 28806 USA	Phone: +1-828-575-9250 +1-800-404-7807 Fax: +1-828-575-9251	E-mail: infoUSA@biovendor.com