

Anti-ERK1

Catalog No. | Description

RES002 | Anti-ERK1 (E19) Signal Transduction Monoclonal Antibody

Clonality | Host Species | Isotype

E19 | Mouse | IgG1

Immunogen

Recombinant full length ERK1 protein

Specificity

Recognizes only the ERK1 protein (e.g.: from human and mouse cells)

Cross Reactivity

WB: ERK1 from human and mouse cells. IP: ERK1 from human cells. ERK1 from other species may also be detectable

Purification

Protein A affinity chromatography from mouse ascites fluid

Applications

IP, WB

Form

1 mg/mL in 10 mM PBS, pH 7.2, with 0.05% NaN₃

Working Conditions

WB (with ECL): 1:1000-10,000 dilution (incubate for one hour at room temperature)

For best results with other assays (e.g.: IP, etc), please determine optimal working dilution by titration test

Storage

Store at -20°C for up to 2 years. Centrifuge after first thaw to maximize product recovery. Aliquot to avoid repeated freeze-thaw cycles. Store aliquots at 4°C for 1-2 weeks

Images

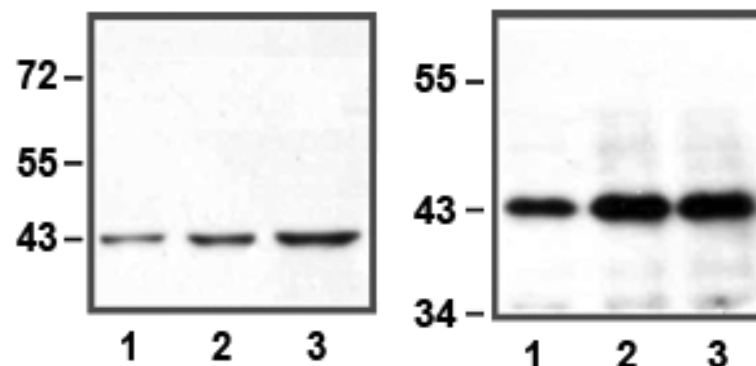


Fig. LEFT: 1:10,000 (0.1 µg/mL) Ab dilution used in WB of HEK293 cell lysate; 1 µg (1), 5 µg (2), and 10 µg (3) of cell lysate used; RIGHT: IP of anti-ERK1 using 50µg of Jurkat cell lysate; 0.5 µg (1), 1µg (2), and 2 µg (3) of anti-ERK1 used

For *in vitro* research use only