

Anti-His Tag

Catalog No. | Description

RET001 | Anti-His Tag (HIS.H8 / EH158) Monoclonal Antibody

Clonality | Host Species | Isotype

HIS.H8 / EH158 | Mouse | IgG2b

Immunogen

HHHHHH (6x His) synthetic peptide conjugated to KLH

Specificity

Recognizes the epitope of 6x His-tags encoded by many commercially available vectors, regardless of the tag's location in the fusion protein sequences (i.e.: reacts with N-terminal, C-terminal or internal 6x His-tags)

Purification

Protein A affinity chromatography from mouse ascites fluid

Applications

Dot, ELISA, IP, IS, WB

Sensitivity

WB (with ECL): 1-2 ng of His-tagged fusion proteins

Form

1 mg/mL in 10 mM PBS, pH 7.2, with 0.05% NaN₃

Working Conditions

WB (with ECL): 1:1000-3000 dilution (incubate for one hour at room temperature)

IS: 1:500-2000 dilution

For best results with other assays (e.g.: Dot, ELISA, IP, etc), please determine optimal working dilution by titration test

Storage

Store at -20°C for up to 2 years. Centrifuge after first thaw to maximize product recovery. Aliquot to avoid repeated freeze-thaw cycles. Store aliquots at 4°C for 1-2 weeks

Images

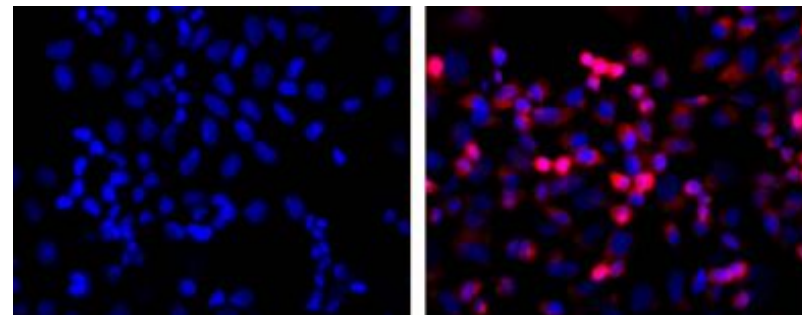


Fig. 01 LEFT: untransfected control; RIGHT: anti-His (in red) on His-tagged fusion proteins in HEK293 cells. Both counterstained with DAPI (in blue)

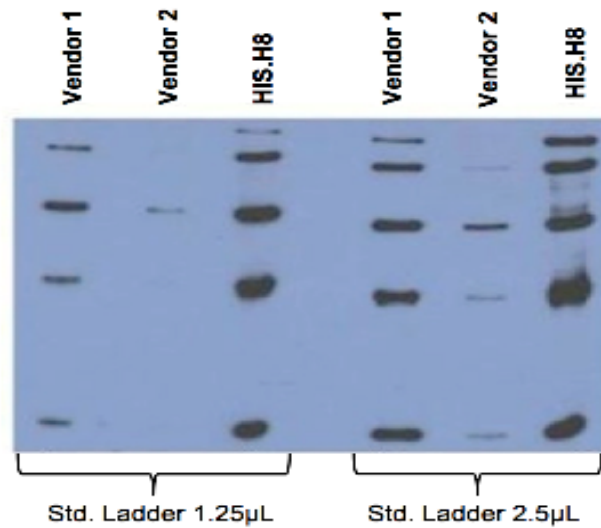


Fig. 02 Comparison between anti-His tag (HIS.H8 / EH158) mAb with 2 different vendor Abs, probed against a standard ladder (Qiagen Cat. No. 34705) containing five different His-tagged proteins. All Ab dilutions are 1:2000 (0.5 µg/mL)

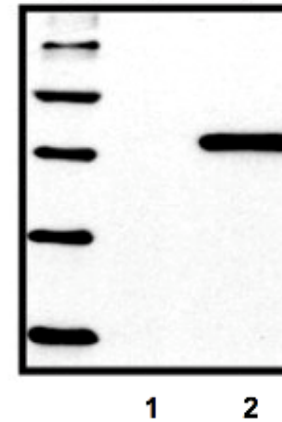


Fig. 03 Standard ladder containing five different His-tagged proteins; untransfected control (1), HEK293 cells transfected with His-tagged protein vector (2)

For *in vitro* research use only