

Anti-GST Tag

Catalog No. | Description

RET003 | Anti-GST Tag (GST.B6 / G2R) Monoclonal Antibody

Clonality | Host Species | Isotype

GST.B6 / G2R | Mouse | IgG2a

Immunogen

GST protein

Specificity

Recognizes native and denatured forms of purified GST or GST fusion proteins

Purification

Protein A affinity chromatography from mouse ascites fluid

Application

Dot, ELISA, IS, IP, WB

Sensitivity

WB (with ECL): 10-50 ng of purified GST or GST fusion proteins

Form

1mg/mL in 10 mM PBS, pH 7.2, with 0.05% NaN₃

Working Condition

WB (with ECL) 1:1000-3000 dilution (incubate for 1 hour at room temperature)

IS: 1:500-2000 dilution

For best results with other assays (e.g.: Dot, ELISA, IP, etc), please determine optimal working dilution by titration test

Storage

Store at -20°C for up to 2 years. Centrifuge after first thaw to maximize product recovery. Aliquot to avoid repeated freeze-thaw cycles. Store aliquots at 4°C for 1-2 weeks

Images

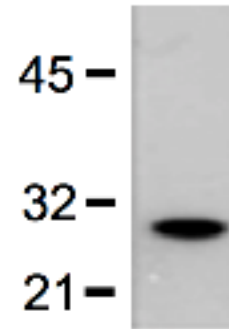


Fig. 1:5000 (0.2 µg/mL) Ab dilution probed against BL-21 bacteria lysate expressing the GST protein

For *in vitro* research use only