

## Anti-V5 Tag

### Catalog No. | Description

RET004 | Anti-V5 Tag (E10 / V4RR) Monoclonal Antibody

### Clonality | Host Species | Isotype

E10 / V4RR | Mouse | IgG1

### Immunogen

GKPIPPELLGLDST (V5) synthetic peptide conjugated to KLH

### Specificity

Recognizes V5 (GKPIPPELLGLDST) tagged fusion proteins

### Purification

Protein A affinity chromatography from culture supernatant of hybridoma cells grown in a bioreactor

### Application

Dot, ELISA, IP, IS, WB

### Sensitivity

WB (with ECL): 1-2ng of V5-tagged fusion proteins

### Form

1 mg/mL in 10 mM PBS, pH 7.2, with 0.05% NaN<sub>3</sub>

### Working Condition

WB (with ECL): 1:1000-3000 dilution (incubate for 1 hour at room temperature)

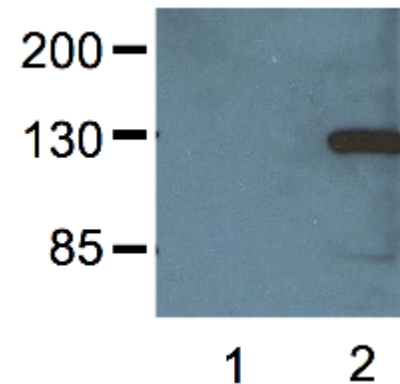
IS: 1:500-2000 dilution

For best results with other assays (e.g.: Dot, ELISA, IP, etc), please determine optimal working dilution by titration test

### Storage

Store at -20°C for up to 2 years. Centrifuge after first thaw to maximize product recovery. Aliquot to avoid repeated freeze-thaw cycles. Store aliquots at 4°C for 1-2 weeks

### Images



**Fig.** 1:000 (1 µg/mL) Ab dilution probed against HEK293 cells transfected with V5-tagged protein vector; untransfected (1) and transfected (2)

**For *in vitro* research use only**