

Anti-Myc Tag

Catalog No. | Description

RET005 | Anti-Myc Tag (Myc.A7 / M19) Monoclonal Antibody

Clonality | Host Species | Isotype

Myc.A7 / M19 | Mouse | IgG1

Immunogen

EQKLISEEDL (Myc) synthetic peptide conjugated to KLH

Specificity

Recognizes the N-terminal or C-terminal Myc-tagged fusion proteins

Purification

Protein A affinity chromatography from mouse ascites fluid

Application

Dot, ELISA, IP, IS, WB

Sensitivity

WB (with ECL): 10-50 ng of Myc-tagged fusion proteins

Form

1 mg/mL in 10 mM PBS, pH 7.2, with 0.05% NaN₃

Working Condition

WB (with ECL): 1:1000-3000 dilution (incubate for 1 hour at room temperature)

IS: 1:500-2000 dilution

For best results with other assays (e.g.: Dot, ELISA, IP, etc), please determine optimal working dilution by titration test

Storage

Store at -20°C for up to 2 years. Centrifuge after first thaw to maximize product recovery. Aliquot to avoid repeated freeze-thaw cycles. Store aliquots at 4°C for 1-2 weeks

Images

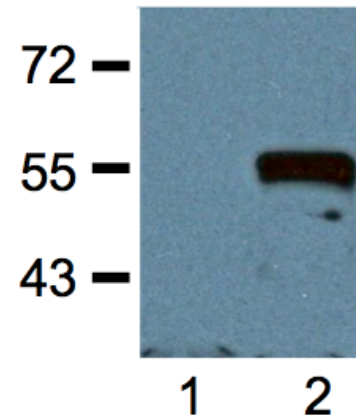


Fig. 1:1000 (1 µg/mL) Ab dilution probed against HEK293 cells transfected with Myc-tagged protein vector; untransfected (1) and transfected (2)

For *in vitro* research use only