

Anti-GFP Tag

Catalog No. | Description

RET007 | Anti-GFP (Green Fluorescent Protein) Tag (GF28R) Monoclonal Antibody

Clonality | Host Species | Isotype

GF28R | Mouse | IgG1

Immunogen

GFP from the jellyfish *Aequorea Victoria* N-terminal peptide-KLH conjugates

Specificity

Recognizes native and denatured forms of GFP and its variants such as: EGFP, YFP, EYFP, and CFP

Purification

Protein A affinity chromatography from mouse ascites fluid

Application

Dot, ELISA, IP, IS, WB

Sensitivity

WB (with ECL): 1-10 ng of purified GFP or GFP fusion proteins

Form

1 mg/mL in 10 mM PBS, pH 7.2, with 0.05% NaN₃

Working Condition

WB (with ECL): 1:1000-3000 dilution (incubate for 1 hour at room temperature)

IS: 1:500-2000 dilution

For best results with other assays (e.g.: Dot, ELISA, IP, etc), please determine optimal working dilution by titration test

Storage

Store at -20°C for up to 2 years. Centrifuge after first thaw to maximize product recovery. Aliquot to avoid repeated freeze-thaw cycles. Store aliquots at 4°C for 1-2 weeks

Images

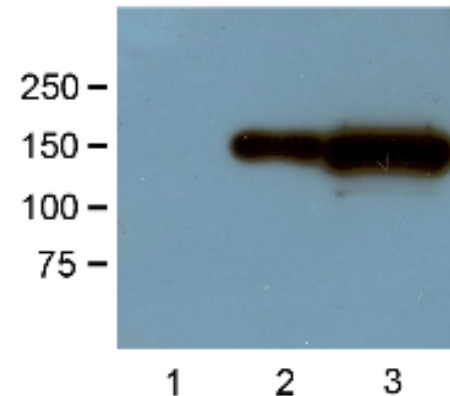


Fig. 1:1000 (1 µg/mL) Ab dilution probed against HEK293 cells transfected with GFP-tagged protein vector: untransfected control (1), 1 µg (2) and 10 µg (3) of cell lysates used

For *in vitro* research use only

update.: 09 110511