

Anti-RFP Tag

Catalog No. | Description

RET008 | Anti-RFP (Red Fluorescent Protein) Tag (RF5R)
Monoclonal Antibody

Clonality | Host Species | Isotype

RF5R | Mouse | IgG1

Immunogen

RFP from the Discosoma sea anemone N-terminal peptide-
KLH conjugates

Specificity

Recognizes native and denatured forms of RFP and its
variants: tag-RFP, turbo-RFP, DeRed, mCherry, mOrange,
etc

Purification

Protein A affinity chromatography from mouse ascites fluid

Application

Dot, ELISA, IP, IS, WB

Sensitivity

WB (with ECL): 1-10 ng of purified RFP or RFP fusion
proteins

Form

1 mg/mL in 10mM PBS, pH 7.2, with 0.05% NaN₃

Working Condition

WB (with ECL): 1:1000-3000 dilution (incubate for 1 hour at
room temperature)

IS: 1:500-2000 dilution

In order to obtain best results in other assays (e.g.: Dot,
ELISA, IP, etc), please determine optimal working dilution
by titration test

Storage

Store at -20°C for up to 2 years. Centrifuge after first thaw
to maximize product recovery. Aliquot to avoid repeated
freeze-thaw cycles. Store aliquots at 4°C for 1-2 weeks

Images

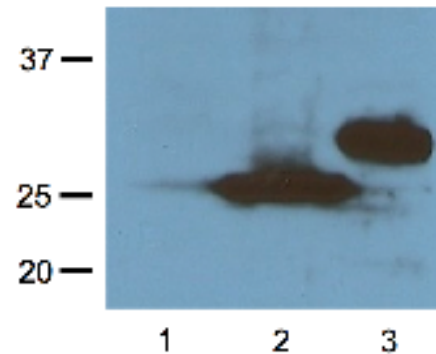


Fig. 1:1000 (1µg/mL) Ab dilution probed against HEK293 cells
transfected with RFP-tagged protein vector; untransfected control
(1), transfected with Turbo-RFP (2), and transfected with DeRed
(3)

For *in vitro* research use only

update.: 09 110511