

sPLA2-IIA Human E. coli

Product Data Sheet

Type: Recombinant

Source: E. coli

Species: Human

Other names: Phospholipase A2 membrane associated, GIIC sPLA2, Group IIA phospholipase A2, Non-pancreatic secretory phospholipase A2, NPS-PLA2, Phosphatidylcholine 2-acylhydrolase 2A, PLA2G2A, PLA2B, PLA2L, RASF-A

Cat. No.:

RD172054100

(0.1 mg)

Description

Total 140 AA. MW: 15.8 kDa (calculated). UniProtKB acc.no. P14555. N-Terminal His-tag, 16 extra AA (highlighted).

Amino Acid Sequence

MRGSHHHHHH GMASHMNLNVN FHRMIKLTG KEAALS YGFY GCHCGVGGRG SPKDATDRCC VTHDCCYKRL EKRGCGTKFL
SYKFSNSGSR ITCAKQDSCR SQLCECDKAA ATCFARNKTT YNKKYQYYSN KHCRGSTPRC

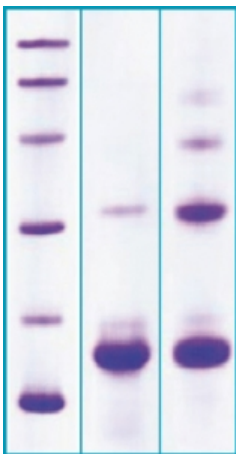
Source

E. coli

Purity

Purity as determined by densitometric image analysis: >95%

SDS-PAGE gel



12% SDS-PAGE separation of Human sPLA2-IIA
1. M.W. marker - 14, 21, 31, 45, 66, 97 kDa
2. reduced and heated sample, 10µg/lane
3. non-reduced and non-heated sample, 10µg/lane

Endotoxin

< 1.0 EU/ug

Formulation

Filtered (0,4 µm) and lyophilized in 0.5 mg/mL in 0.05M Acetate buffer pH4

Reconstitution

Add 0.1M Acetate buffer pH4 to prepare a working stock solution of approximately 0.5 mg/mL and let the lyophilized pellet dissolve completely. For conversion into higher pH value, we recommend intensive dilution by relevant buffer to a concentration of 10µg/mL. In higher concentrations the solubility of this antigen is limited. Filter sterilize your culture media/working solutions containing this non-sterile product before using in cell culture.

Shipping

At ambient temperature. Upon receipt, store the product at the temperature recommended below.

Storage, Stability/Shelf Life

Store lyophilized protein at -80°C. Lyophilized protein remains stable until the expiry date when stored at -80°C. Aliquot reconstituted protein to avoid repeated freezing/thawing cycles and store at -80°C for long term storage. Reconstituted protein can be stored at 4°C for a limited period of time; it does not show any change after two weeks at 4°C.

Quality Control Test

BCA to determine quantity of the protein.
SDS PAGE to determine purity of the protein.
LAL to determine quantity of endotoxin.

Applications

Western blotting

Note

This product is intended for research use only.

References to this Product

- Ronkko S, Rekonen P, Kaamiranta K, Puustjarvi T, Terasvirta M, Uusitalo H. *Phospholipase A2 in chamber angle of normal eyes and patients with primary open angle glaucoma and exfoliation glaucoma.* [Mol Vis](#) . Mar 26;13:408-17 (2007)

HEADQUARTERS: BioVendor Laboratorní medicina, a.s.	Karasek 1767/1	621 00 Brno CZECH REPUBLIC	Phone: +420-549-124-185 Fax: +420-549-211-460	E-mail: info@biovendor.com sales@biovendor.com Web: www.biovendor.com
AUSTRIA: BioVendor GesmbH	Nußdorfer Straße 20/10	1090 Vienna AUSTRIA	Phone: +43-1-89090-25 Fax: +43-1-89090-2515	E-mail: infoAustria@biovendor.com
GERMANY, SWITZERLAND: BioVendor GmbH	Otto-Hahn-Straße 16	34123 Kassel GERMANY	Phone: +49-6221-433-9100 Fax: +49-6221-433-9111	E-mail: infoEU@biovendor.com
USA, CANADA AND MEXICO: BioVendor LLC	128 Bingham Rd. Suite 1300	Asheville, NC 28806 USA	Phone: +1-828-575-9250 +1-800-404-7807 Fax: +1-828-575-9251	E-mail: infoUSA@biovendor.com