

## Anti-GAPDH

### Catalog No. | Description

REL001 | Anti-GAPDH (GA1R) Loading Control Monoclonal Antibody

### Clonality | Host Species | Isotype

GA1R | Mouse | IgG1

### Immunogen

Recombinant GAPDH

### Specificity

Recognizes native and denatured forms of GAPDH (~37kDa)

### Cross Reactivity

GAPDH from BL-21 bacteria, Sf9 insect, *Saccharomyces cerevisiae* (yeast), human, mouse, rat, rabbit, chicken, and hamster. GAPDH from other species may also be detectable

### Purification

Protein A affinity chromatography from mouse ascites fluid

### Application

Dot, ELISA, IS, WB

### Form

1 mg/mL in 10 mM PBS, pH 7.2, with 0.05% NaN<sub>3</sub>

### Working Condition

WB (with ECL): 1:1000-10,000 dilution (incubate for 1 hour at room temperature)

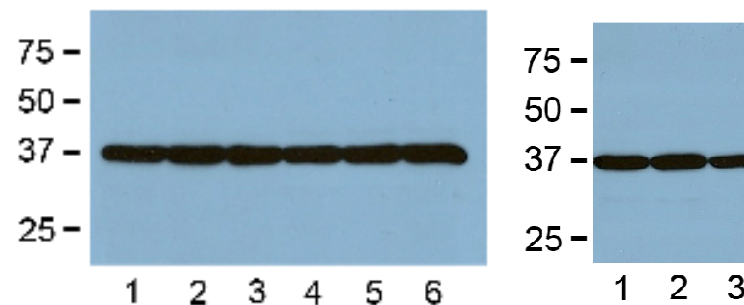
IS: 1:500-2000 dilution

For best results with other assays (e.g.: Dot, ELISA, etc), please determine optimal working dilution by titration test

### Storage

Store at -20°C for up to 2 years. Centrifuge after first thaw to maximize product recovery. Aliquot to avoid repeated freeze-thaw cycles. Store aliquots at 4°C for 1-2 weeks

### Images



**Fig.** LEFT: 1:2000 (0.5 µg/mL) Ab dilution used in WB of 5 µg/lane tissue lysates from human (1), mouse (2), rat (3), rabbit (4), chicken (5), and hamster (6). RIGHT: WB from BL-21 bacteria (1), Sf9 insect (2), and *Saccharomyces cerevisiae* (3)

**For *in vitro* research use only**