

Anti- β -Actin

Catalog No. | Description

REL002 | Anti- β -Actin (BA3R) Loading Control Monoclonal Antibody

Clonality | Host Species | Isotype

BA3R | Mouse | IgG2b

Immunogen

β -Actin N-terminal peptide-KLH conjugates

Specificity

Recognizes native and denatured forms of β -Actin (~42kDa)

Cross Reactivity

β -Actin from human, mouse, rat, rabbit, and chicken. β -Actin from other species may also be detectable

Purification

Protein A affinity chromatography from mouse ascites fluid

Application

Dot, ELISA, IS, WB

Form

1 mg/mL in 10 mM PBS, pH 7.2, with 0.05% NaN₃

Working Condition

WB (with ECL): 1:1000-10,000 dilutions (incubate for 1 hour at room temperature)

IS: 1:500-2000 dilution

For best results with other assays (e.g.: Dot, ELISA, etc), please determine optimal working dilution by titration test

Storage

Store at -20°C for up to 2 years. Centrifuge after first thaw to maximize product recovery. Aliquot to avoid repeated freeze-thaw cycles. Store aliquots at 4°C for 1-2 weeks

Images

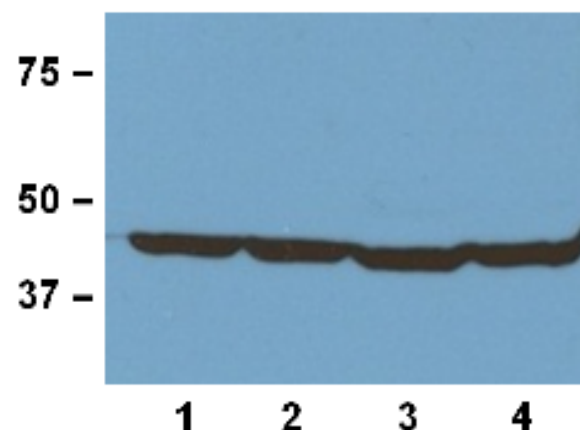


Fig. 1:1000 (1 μ g/mL) Ab dilution used in WB of 20 μ g/lane tissue lysates from human (1), mouse (2), rat (3), and rabbit (4)

For *in vitro* research use only

update.: 09 110511