

## Leukocyte Cell-Derived Chemotaxin-2 Human E. coli

### Product Data Sheet

**Type:** Recombinant

**Source:** E. coli

**Species:** Human

**Other names:** LECT-2, hLECT2, LECT2

**Cat. No.:**

RD172370100

(0.1 mg)

### Description

Total 143 AA. MW: 16 kDa (calculated). UniProtKB acc.no. O14960 (Gly19-Leu151). N-terminal histag (10 extra AA). Protein identity confirmed by LC-MS/MS.

### Introduction to the Molecule

LECT2 acts as a chemotactic factor to neutrophils. It stimulates the proliferation of chondrocytes and osteoblasts. It is strongly expressed in liver and weakly in testis.

### Research topic

Diabetology - Other Relevant Products, Oncology

### Amino Acid Sequence

**MKHHHHHHS** GPWANICAGK SSNEIRTCDR HGCGQYSAQR SQRPHQGVDI LCSAGSTVYA PFTGMIVGQE KPYQNKNAIN  
NGVRISGRGF CVKMFYIKPI KYKGPIKKGE KLGTLPLQK VYPGIQSHVH IENCDSSDPT AYL

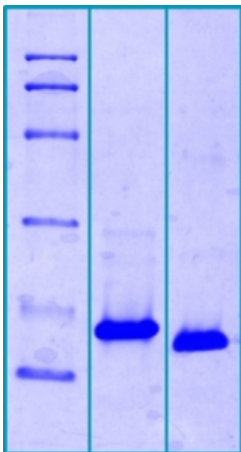
### Source

E. coli

### Purity

Purity as determined by densitometric image analysis: > 95 %

### SDS-PAGE gel



14 % SDS-PAGE separation of Human LECT-2:

1. M.W. marker - 14, 21, 31, 45, 66, 97 kDa

2. reduced and boiled sample, 2.5 µg/lane

3. non-reduced and non-boiled sample, 2.5 µg/lane

### Endotoxin

< 1.0 EU/ug

### Formulation

Filtered (0.4 µm) and lyophilized in 20 mM Tris buffer, 50 mM NaCl, pH 7,5

### Reconstitution

Add 200 µl of deionized water to prepare a working stock solution of approximately 0.5 mg/ml and let the lyophilized pellet dissolve completely. Filter sterilize your culture media/working solutions containing this non-sterile product before using in cell

culture.

## Shipping

At ambient temperature. Upon receipt, store the product at the temperature recommended below.

## Storage, Stability/Shelf Life

Store the lyophilized protein at -80 °C. Lyophilized protein remains stable until the expiry date when stored at -80 °C. Aliquot reconstituted protein to avoid repeated freezing/thawing cycles and store at -80 °C for long term storage. Reconstituted protein can be stored at 4 °C for a week.

## Quality Control Test

BCA to determine quantity of the protein.

SDS-PAGE to determine purity of the protein.

LAL TEST to determine endotoxin level.

## Applications

ELISA, Western blotting

## Note

This product is intended for research use only.

<b>HEADQUARTERS:</b> BioVendor Laboratorní medicína, a.s.	Karasek 1767/1	621 00 Brno CZECH REPUBLIC	Phone: +420-549-124-185 Fax: +420-549-211-460	E-mail: info@biovendor.com sales@biovendor.com Web: www.biovendor.com
<b>AUSTRIA:</b> BioVendor GesmbH	Nußdorfer Straße 20/10	1090 Vienna AUSTRIA	Phone: +43-1-89090-25 Fax: +43-1-89090-2515	E-mail: infoAustria@biovendor.com
<b>GERMANY, SWITZERLAND:</b> BioVendor GmbH	Otto-Hahn-Straße 16	34123 Kassel GERMANY	Phone: +49-6221-433-9100 Fax: +49-6221-433-9111	E-mail: infoEU@biovendor.com
<b>USA, CANADA AND MEXICO:</b> BioVendor LLC	128 Bingham Rd. Suite 1300	Asheville, NC 28806 USA	Phone: +1-828-575-9250 +1-800-404-7807 Fax: +1-828-575-9251	E-mail: infoUSA@biovendor.com