

BioVendor new products

April, 2017

Dear customer, we would like to introduce our new products and hope you will find them interesting. Below is a list of events, in which we plan to participate in 2017:

AACR Annual Meeting 2017 (01 \ 04 \ 2017 - 05 \ 04 \ 2017 - Washington, D.C.)

ECCMID 2017 (22 \ 04 \ 2017 - 25 \ 04 \ 2017 - Vienna)

85th EAS congress 2017 (23 \ 04 \ 2017 - 26 \ 04 \ 2017 - Prague)

BIOTECHNICA 2017 (16 \ 05 \ 2017 - 18 \ 05 \ 2017 - Hannover)

RNA society congress 2017 (30 \ 05 \ 2017 - 03 \ 06 \ 2017 - Prague)

2017 BIO International Convention (19 \ 06 \ 2017 - 22 \ 06 \ 2017 - San Diego)

IMMUNOASSAYS

» FEATURED PRODUCT: HUMAN BETATROPHIN ELISA

Betatrophin (lipasin, ANGPTL8) is a **new hormone** that is produced in tissues such as adipose tissue and liver. **High plasma betatrophin** is mainly associated with **metabolic syndrome, T1DM, T2DM, and gestational diabetes, polycystic ovary syndrome, NAFL, and atherogenic lipid profile.**

- Validated for human serum and plasma (EDTA, heparin, citrate)
- High sensitivity (LOD 0.24 ng/ml)
- All test procedures are performed at room temperature
- Interesting new member of broad BioVendor portfolio of energy metabolism and diabetes markers

Betatrophin is secreted from the liver into circulation and is involved in **triglyceride metabolism** through its **interaction with Angptl3** and **regulation of lipoprotein lipase activity.**

Lipoprotein lipase binds to the surface of capillary microvascular endothelial cells and hydrolyzes TAG in chylomicrons and VLDL, yielding free fatty acids, which are then taken up by peripheral tissues including fat, muscle and heart. **Betatrophin** likely inhibits lipoprotein lipase directly or indirectly.

Betatrophin and **Angptl4** show **opposite changes in expression by various stimuli**, such as fasting, refeeding, obesity and cold exposure.

[Human Betatrophin ELISA](#)

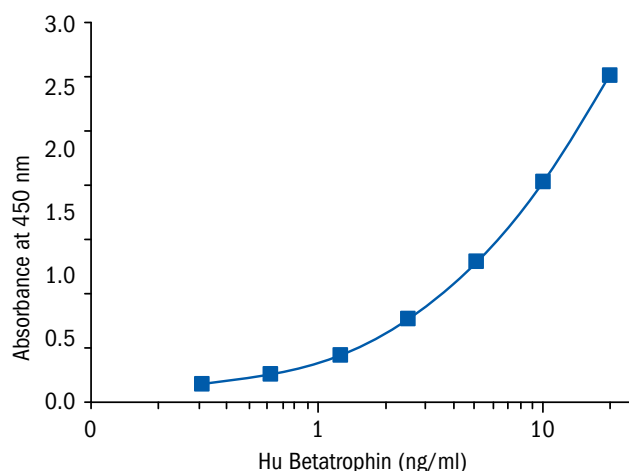
RELATED PRODUCTS

[RD291531200R](#) Betatrophin Mouse ELISA

[RD172347100](#) Betatrophin Human *E. coli*

[RD272347100](#) Betatrophin Mouse *E. coli*

[RD372347100](#) Betatrophin Rat *E. coli*



NEW IMMUNOASSAYS

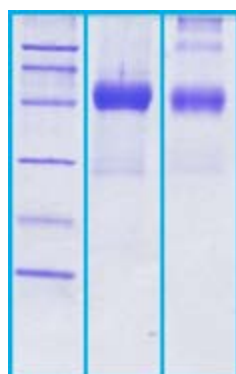
CAT. NO.		NAME		IVD/RUO	ASSAY FORMAT
RD194169200R	Human	Active Renin	ELISA	RUO	Capture ELISA, Biotin-labelled antibody
RCD030R		Aldosterone	ELISA	RUO	Competitive
RD199429200R	Human	Anti-Alpha-Galactosyl IgE	ELISA	RUO	Sandwich ELISA, Biotin-labelled antibody
RD191347200R	Human	Betatrophin	ELISA	RUO	Sandwich ELISA, Biotin-labelled antibody
RD191035200R	Human	Connective Tissue Growth Factor	ELISA	RUO	Sandwich ELISA, Biotin-labelled antibody
RD194559200R	Human	Interleukin-1 beta	ELISA	RUO	Sandwich ELISA, Biotin-labelled antibody
RAF143R	Human	Interleukin-18	ELISA	RUO	Sandwich ELISA, Biotin-labelled antibody
RAF144R	Mouse	Interleukin-18	ELISA	RUO	Sandwich ELISA, Biotin-labelled antibody
RD194558200R	Human	Interleukin-8	ELISA	RUO	Sandwich ELISA, HRP-labelled antibody
RD191370200R	Human	LECT2	ELISA	RUO	Sandwich ELISA, Biotin-labelled antibody
RD191439100CS	Human	Matrix Metalloproteinase-9	ELISA	RUO	Sandwich ELISA, HRP-labelled antibody
RD191477200R	Human	Pentraxin 3	ELISA	RUO	Competitive ELISA, Immobilized antigen
RTC022R	Canine	Prolactin	ELISA	RUO	Sandwich ELISA, Biotin-labelled antibody
RCD029R		Reverse T3	ELISA	RUO	Sandwich ELISA, Biotin-labelled antibody
RD191373200R	Human	Secretoglobulin 3A2	ELISA	RUO	Sandwich ELISA, Biotin-labelled antibo
RD191167200R	Human	Total Prorenin/Renin	ELISA	RUO	Sandwich ELISA, Biotin-labelled antibody
RFTE/96R	Human	TSH Receptor Autoantibody	ELISA	RUO	Sandwich ELISA, Biotin-labelled antibody

RECOMBINANT PROTEINS

» FEATURED PRODUCT: HUMAN SCLEROSTIN HEK293

Sclerostin (SOST) an **osteocyte-derived**, secreted, cysteine-knot protein, the product of the SOST gene (located on chromosome 17q12-q21 in humans). It is a protein, with a length of 213 residues and has a dssp secondary structure that is 28% beta sheet. The protein is secreted as a monomer. Sclerostin was originally identified as an important regulator of bone homeostasis that **inhibits bone formation**. Originally, sclerostin was believed to be a non-classical bone morphogenetic protein (BMP) antagonist, recently sclerostin has been identified as **binding to LRP5/6 receptors** and **inhibiting the Wnt signaling** pathway. The inhibition of the Wnt pathway leads to decreased bone formation. Sclerostin is expressed in osteocytes and some chondrocytes and it inhibits bone formation by osteoblasts. **Mutations** in the gene that encodes the sclerostin protein are associated with disorders associated with high bone mass, **sclerosteosis** and **van Buchem** disease. Antagonizing the function of sclerostin is a **potential therapeutic strategy** to increase high quality bone. Anti-sclerostin human **monoclonal antibodies** exhibited positive effects in clinical trials in **osteoporotic women**.

BioVendor produces recombinant Human Sclerostin in HEK293 cell line. The monomer of the protein contains 196 AA. MW: 22.4 kDa (calculated). UniProtKB acc. No. Q9BQB4 (Gln24-Tyr213). C-terminal His-tag (6 extra AA). Protein identity confirmed by LC-MS/MS. Endotoxin-free.



14 % SDS-PAGE separation of Human SOST (HEK):

1. M.W. marker - 14, 21, 31, 45, 66, 97 kDa
2. Reduced and boiled sample, 2.5 µg/lane
3. Non-reduced and non-boiled sample, 2.5 µg/lane

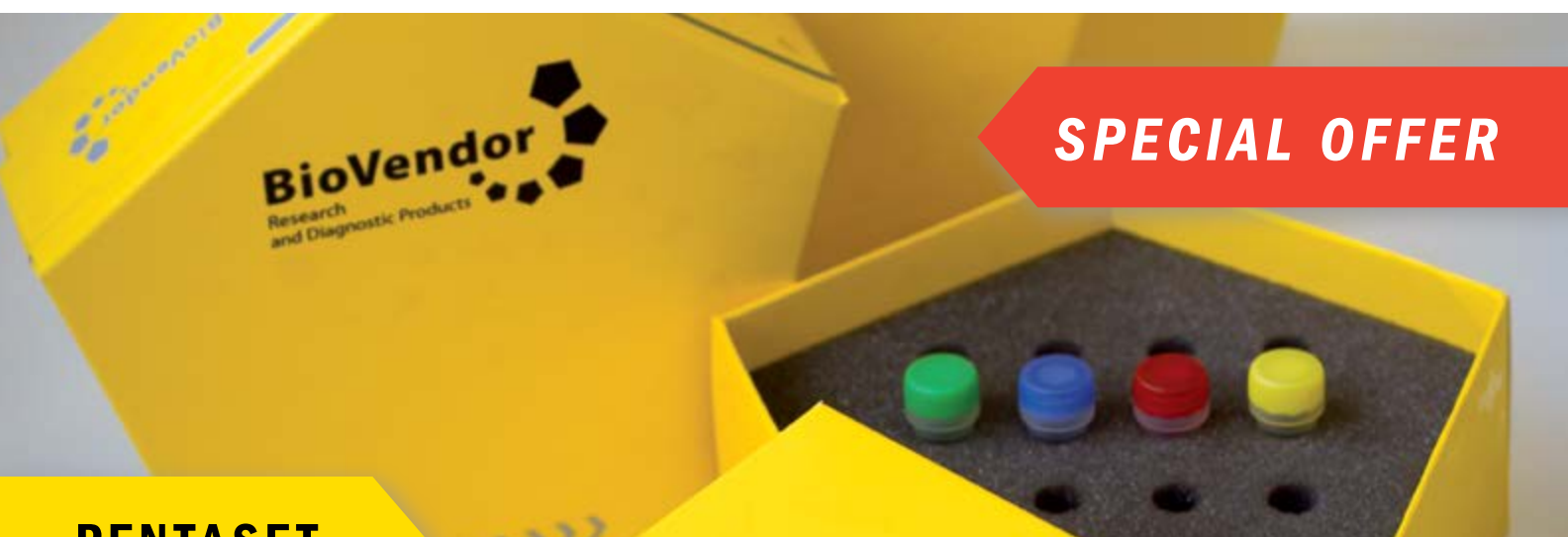
[Human Sclerostin HEK293](#)

RELATED PRODUCTS

[RD172244100 Sclerostin Human *E. coli*](#)

NEW RECOMBINANT PROTEINS

CAT. NO.		NAME	SIZE	SOURCE
RD172023025-F	Human	Adiponectin Solution	0.025 mg	HEK293
RD172023100-F	Human	Adiponectin Solution	0.1 mg	HEK293
RD165348025	Human	Annexin A2 NATIVE	0.025 mg	Adipose Tissue
RD172501100	Human	Calmodulin-Like Protein 5	0.1 mg	<i>E. coli</i>
RD172530100	Human	Ephrin-A1	0.1 mg	HEK293
RD172531100	Human	Follistatin-Related Protein 1	0.1 mg	HEK293
RD272521100	Mouse	Major Urinary Protein 1	0.1 mg	<i>E. coli</i>
RD172528100	Human	NOV	0.1 mg	HEK293
RD172390100	Human	Placenta Growth Factor	0.1 mg	<i>E. coli</i>
RD172244100-HEK	Human	Sclerostin	0.1 mg	HEK293
RD172148100-E.coli	Human	Tumor Necrosis Factor Ligand Superfamily Member 12	0.1 mg	<i>E. coli</i>



PENTASET

SPECIAL OFFER >> BUY ONE PENTASET, GET ONE FREE

PENTASET is an ELISA development kit, a cheap alternative to high-end ELISA kits.

PENTASET contains selected antibodies and recombinant standard in optimized concentrations, reducing development time and assay variability. The basic set is sufficient to make 5 x 96-well microtiter plates. Multi-packs (up to 20 x 96 wells) are available.

- Human Adiponectin PENTASET ([RD120023](#))
- Mouse Adiponectin PENTASET ([RD220023](#))
- Human Cystatin C PENTASET ([RD120009](#))
- Mouse Cystatin C PENTASET ([RD220009](#))
- Rat Cystatin C PENTASET ([RD320009](#))
- Human Leptin PENTASET ([RD120001](#))
- Mouse Leptin PENTASET ([RD220001](#))
- Rat Leptin PENTASET ([RD320001](#))

See more on biovendor.com/pentaset

BioVendor – Laboratorni medicina a.s.

Phone: +420 549 124 185

Fax: +420 549 211 460

E-mail: info@biovendor.com

www.biovendor.com

BioVendor
Research
and Diagnostic Products