

BioVendor new products

June 24, 2015

Dear customer, we would like to introduce our new products and hope you will find them interesting. Below is a list of events, in which we plan to participate in 2015:

18th Meeting on T-Cells Subsets and Functions (29 \ 06 \ 2015 - 30 \ 06 \ 2015 - Marburg)

AACC (26 \ 07 \ 2015 - 30 \ 07 \ 2015 - Atlanta)

4th European Congress of Immunology (06 \ 09 \ 2015 - 09 \ 09 \ 2015 - Vienna)

14th International Conference on Lyme Borreliosis and other Tick-Borne Diseases (27 \ 09 \ 2015 - 30 \ 09 \ 2015 - Vienna)

MEDICA 2015 (16 \ 11 \ 2015 - 19 \ 11 \ 2015 - Düsseldorf)

XIX. Lipid Meeting Leipzig (10 \ 12 \ 2015 - 12 \ 12 \ 2015 - Leipzig)

IMMUNOASSAYS

» FEATURED PRODUCT: HUMAN suPAR ELISA

A new ELISA kit for the quantification of **suPAR – a novel marker of the immunity system activation.**

- Validated for human serum and plasma (EDTA, heparin, citrate) samples
- High sensitivity (LOD 5 pg/ml)
- Prediction of various **infection disease severity**
- Diagnostics and **risk stratification for sepsis patients**
- Marker of focal segmental glomerulosclerosis (**FSGS**)

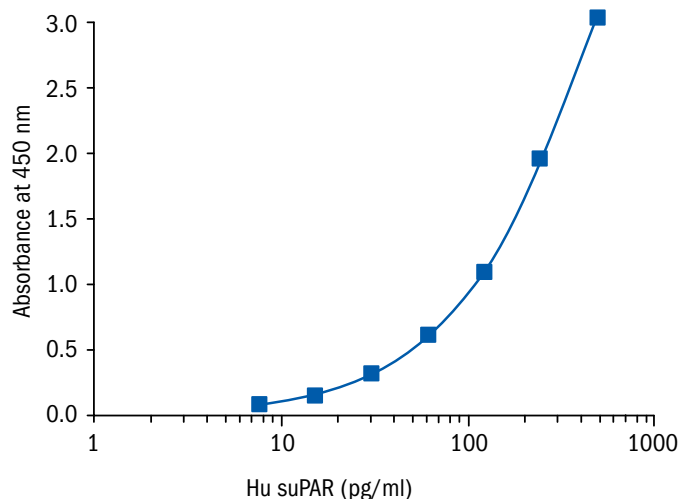
The **urokinase-type plasminogen activator receptor (uPAR)** is a glycosylphosphatidylinositol (GPI)-anchored membrane glycoprotein, glycosylated uPAR has a molecular mass of approximately 60 kDa. Cleavage of uPAR from the cell can occur both at the GPI-anchor and at the linker region between DI and DII domains. Resulting **soluble uPAR (suPAR)** is a circulating protein ranging from 20 to 50 kDa. The soluble uPAR can be measured in the **blood, urine, saliva**, bronchoalveolar lavage (**BALF**) and cerebrospinal fluid (**CSF**).

Elevated levels of suPAR in circulation is a marker for **activation of immune and inflammatory systems** and **predictive for disease severity** in bacteraemia, human immunodeficiency virus infection (HIV), bacterial meningitis, active pulmonary tuberculosis, ventilator-associated pneumonia with sepsis, and in intensive care unit (ICU) patients with or without sepsis. Plasma suPAR correlates with important features of dysmetabolism in HIV-infected patients.

In the **diagnostics of severe sepsis**, suPAR levels was found to be strong predictors of 28-day, 90-day and even 1-year case fatality and allowed **a better risk stratification compared to classical inflammatory markers such as procalcitonin, interleukin-6 or C-reactive protein.**

The suPAR was also discovered as **a cause of chronic renal disease** focal segmental glomerulosclerosis (**FSGS**) via activation of podocyte β 3-integrin.

Lastly, plasma suPAR level was also shown to predict incident cancer, cardiovascular disease, type 2 diabetes and mortality in the general population, suggesting that it might have a role as **a biomarker of low-grade inflammation.**



NEW IMMUNOASSAYS

CAT. NO.		NAME	IVD/RUO	ASSAY FORMAT
RIS021R		1,25(OH) ₂ Vitamin D Total ELISA	RUO	Sandwich ELISA, HRP-labelled antibody
RTC010R		17-OH-Progesterone free in saliva ELISA	RUO	Competitive ELISA, Immobilized antigen
R21E/96R		21-Hydroxylase (21-OH) Autoantibody ELISA	RUO	Sandwich ELISA, Biotin-labelled antibody
RIS022R		25OH Vitamin D Total ELISA	RUO	Sandwich ELISA, HRP-labelled antibody
RIS020R		25-OH Vitamin D Total ELISA	RUO	Sandwich ELISA, HRP-labelled antibody
RA19007R		AcSDKP ELISA	RUO	Competitive ELISA
RA19001R	Rat	Albumin, High Sensivity ELISA	RUO	Competitive ELISA
RTC011R		Androstenedione free in saliva ELISA	RUO	Competitive ELISA
RA05230.96R		Anthrax Edema Factor Assay kit	RUO	
RA19002R	Rat	Atriopeptin ELISA	RUO	
RA05481.96R	Human	CGRP ELISA	RUO	Sandwich ELISA, AChE-labelled antibody
RA05482.96R	Rat	CGRP ELISA	RUO	Sandwich ELISA, AChE-labelled antibody
RA019482R		CRGP Affinity Sorbent ELISA	RUO	
RS-1512.0001	Human/ Porcine/Rat	C-type Natriuretic Peptide (32-53) ELISA	RUO	Competitive ELISA
RTC012R		DHEA free in saliva ELISA	RUO	Competitive ELISA
RTC013R		Estradiol free in saliva ELISA	RUO	Competitive ELISA
RTC014R		Estriol free in saliva ELISA	RUO	Competitive ELISA
RTC015R		Estrone free in saliva ELISA	RUO	Competitive ELISA
RIS023R		Extraction Cartridges for 1,25(OH) ₂ Vitamin D Total ELISA	RUO	
RIS024R		Extraction kit for 1,25(OH) ₂ Vitamin D Total ELISA	RUO	
RKARF1991R		Free 25OH Vitamin D ELISA	RUO	Sandwich ELISA, HRP-labelled antibody
RD191309200R	Human	Ganglioside GM2 Activator ELISA	RUO	Sandwich ELISA, Biotin-labelled antibody
RA494062500R	Canine	Ghrelin Acylated Easy Sampling ELISA	RUO	Sandwich ELISA, AChE-labelled antibody
RA194062400-384R	Human	Ghrelin Acylated ELISA	RUO	Sandwich ELISA, AChE-labelled antibody
RA194062500R	Human	Ghrelin Acylated Easy Sampling ELISA	RUO	Sandwich ELISA, AChE-labelled antibody
RA394062500R	Mouse/Rat	Ghrelin Acylated Easy Sampling ELISA	RUO	Sandwich ELISA, AChE-labelled antibody
RA594062400R	Porcine	Ghrelin Acylated ELISA	RUO	Sandwich ELISA, AChE-labelled antibody
RA194063500R	Human	Ghrelin Unacylated Easy Sampling ELISA	RUO	Sandwich ELISA, AChE-labelled antibody
RA594063400R	Porcine	Ghrelin Unacylated ELISA	RUO	Sandwich ELISA, AChE-labelled antibody
RS-1511.0001	Human/ Mouse/Rat	GLP-1 (32-36) amide ELISA, High Sensitivity	RUO	Competitive ELISA
RD191327200R	Human	Granulysin ELISA	RUO	Sandwich ELISA, Biotin-labelled antibody
RA19003R	Rat	Growth Hormone (GH) ELISA	RUO	Sandwich ELISA
RA19008R		Histamine ELISA	RUO	Competitive ELISA
REA205/96R		Homoarginine ELISA	RUO	Competitive ELISA
RTC800R	Rat	Insulin Control ELISA	RUO	
RA19004-480R	Mouse/Rat	Insulin ELISA	RUO	Competitive ELISA
RA19004R	Mouse/Rat	Insulin ELISA	RUO	Competitive ELISA
RTC018R	Rat	Insulin ELISA	RUO	Sandwich ELISA, HRP-labelled antibody
RD191276200R	Human	Neudesin ELISA	RUO	Sandwich ELISA, Biotin-labelled antibody
RD191326200R	Human	Neuroserpin ELISA	RUO	Sandwich ELISA, Biotin-labelled antibody
RIM002R	Human	NSE ELISA	RUO	Sandwich ELISA, HRP-labelled antibody
RTC016R		Progesterone free in Saliva ELISA	RUO	Competitive ELISA
RA19005R	Mouse	Prolactin ELISA	RUO	Competitive ELISA
RS-1515.0001		Prostate-Specific Antigen (PSA) (243-261) ELISA	RUO	Competitive ELISA
RS-1514.001		Prostate-Specific Antigen (PSA) (243-261) ELISA, High Sensitivity	RUO	Competitive ELISA

CAT. NO.		NAME	IVD/RUO	ASSAY FORMAT
RAT004R		S-Adenosyl Homocystein (SAH) for plasma and serum ELISA	RUO	Competitive ELISA
RAT003R		S-Adenosyl Homocystein (SAH) for plasma and serum ELISA	RUO	Competitive ELISA
RD191368200R	Human	Serglycin ELISA	RUO	Sandwich ELISA, Biotin-labelled antibody
RD191408200R	Human	suPAR ELISA	RUO	Sandwich ELISA, Biotin-labelled antibody
RTC017R		Testosterone free in Saliva ELISA	RUO	Competitive ELISA
RS-1513.0001	Human/Bovine/ Horse/Rat	Thymosin b4 ELISA	RUO	Competitive ELISA
RD491163200R	Canine	Uromodulin ELISA	RUO	Sandwich ELISA, Biotin-labelled antibody

EXPANSION OF IVD PRODUCTS

Within the framework of our continuous expansion of IVD products, we are happy to announce that Human Anti-IgA isotype IgG ELISA is now available for IVD use.

RECOMBINANT PROTEINS

» FEATURED PRODUCT: HUMAN FOLLISTATIN HEK293

Follistatin (FST) is a monomeric glycosylated protein unrelated to inhibin with the ability to specifically bind activin. FST is encoded by a single gene which gives rise to various alternative splicing, glycosylation and proteolytic cleavage variants. Two main variants of FST are encoded through alternative splicing at the carboxyl-terminus. A 288-residue molecule (FST288) terminates after the third FST domain, whereas a 315-residue form is extended by an extra exon to include a highly acidic 27-residue "tail."

FST is produced and plays a regulatory role **in the gonads, pituitary gland, pregnancy membranes, liver and kidney**, and also circulates in **blood**.

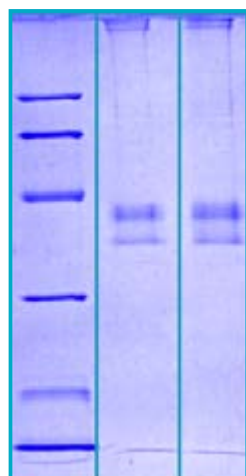
FST level **increases in the third trimester**, with a dramatic increase in the final month, and disappears postpartum.

FST/activin ratio plays role in **inflammation** and is often prognostic of disease severity.

The role of activin and/or follistatin in tissue remodelling and fibrosis has been found in lungs, liver, and heart.

FST plays a role also in **bone metabolism** and activin regulation.

Besides activin, FST binds with lower affinity to several other members of the TGF β superfamily including GDF9, myostatin (GDF8) and several bone morphogenetic proteins (BMP'S).



12 % SDS-PAGE separation of Human Follistatin (HEK293):

1. M.W. marker - 14, 21, 31, 45, 66, 97 kDa
2. Reduced and boiled sample, 2.5 μ g/lane
3. Non-reduced and non-boiled sample, 2.5 μ g/lane

RELATED PRODUCTS

[RD193168200R](#) Follistatin Human ELISA

[RD172168025](#) Follistatin Human *E. coli*

[RD184168100](#) Follistatin Human, Sheep Polyclonal Antibody

NEW RECOMBINANT PROTEINS

Cost-effective 100 µg MINI-BULK quantities

New: Range of 25 µg vials

CAT. NO.		NAME		SIZE	SOURCE
RD172112025	Human	Adiponectin Globular	Rec. Prot.	0.025 mg	<i>E. coli</i>
RD172073025	Human	Angiopoietin-Like Protein 4	Rec. Prot.	0.025 mg	<i>E. coli</i>
RD272464100	Mouse	Corticosteroid-Binding Globulin	Rec. Prot.	0.1 mg	HEK293
RD272455100	Mouse	Cyclophilin A	Rec. Prot.	0.1 mg	<i>E. coli</i>
RD372454100	Rat	Cyclophilin A	Rec. Prot.	0.1 mg	<i>E. coli</i>
RD172363100	Human	Cyclophilin E	Rec. Prot.	0.1 mg	<i>E. coli</i>
RD272184025	Mouse	Fibroblast Growth Factor 15	Rec. Prot.	0.025 mg	<i>E. coli</i>
RD172168025	Human	Follistatin	Rec. Prot.	0.025 mg	<i>E. coli</i>
RD172242100	Human	Galectin-9	Rec. Prot.	0.1 mg	<i>E. coli</i>
RD172357100	Human	Glutathione S-transferase kappa 1	Rec. Prot.	0.1 mg	<i>E. coli</i>
RD172457100	Human	Metadherin	Rec. Prot.	0.1 mg	<i>E. coli</i>
RD172043025	Human	Neuroglobin	Rec. Prot.	0.025 mg	<i>E. coli</i>
RD172100025	Human	Omentin	Rec. Prot.	0.025 mg	<i>E. coli</i>
RD172456100	Human	Peptidyl-prolyl Cis-trans Isomerase FKBP5	Rec. Prot.	0.1 mg	<i>E. coli</i>
RD572451100	Porcine	Procalcitonin	Rec. Prot.	0.1 mg	<i>E. coli</i>
RD372450100	Rat	Procalcitonin	Rec. Prot.	0.1 mg	<i>E. coli</i>
RD172078025	Human	Regenerating Protein 1 alpha	Rec. Prot.	0.025 mg	<i>E. coli</i>
RD172084025	Human	Regenerating Protein 1 beta	Rec. Prot.	0.025 mg	<i>E. coli</i>
RD172208025	Human	S100A1	Rec. Prot.	0.025 mg	<i>E. coli</i>
RD172244025	Human	Sclerostin	Rec. Prot.	0.025 mg	<i>E. coli</i>
RD172116025-HEK	Human	Soluble Advanced Glycation End Product-Specific Receptor	Rec. Prot.	0.025 mg	HEK293
RD172159025	Human	Trefoil Factor 2	Rec. Prot.	0.025 mg	<i>E. coli</i>
RD172093025	Human	Zinc-Alpha-2-Glycoprotein	Rec. Prot.	0.025 mg	HEK293

ANTIBODIES

» FEATURED PRODUCTS:

ANTI-HUMAN CYSTEINE-RICH SECRETORY PROTEIN 1, RABBIT AND SHEEP ANTIBODIES

Cysteine-Rich Secretory Protein 1 (CRISP-1, AEG-like protein, ARP, Acidic epididymal glycoprotein homolog, AEG1), 28.5 kDa epididymal protein, is a member of the cysteine-rich secretory proteins (CRISPs) family.

CRISPs show a strong expression bias to **the mammalian male reproductive tract**. In the male reproductive tract CRISPs have been implicated in many aspects of male germ cell biology spanning haploid germ cell development, epididymal maturation, **capacitation**, motility and **the actual processes of fertilization**.

Human CRISP-1 is produced throughout the epididymis, whereupon it is incorporated into epididymosomes and presumably transferred onto the sperm surface. CRISP-1 was also detected as **a soluble form in the seminal plasma**.

Findings indicate **vasectomy has an effect on CRISP-1 expression**, because after vasectomy, the flux and composition of the epididymal fluid are modified.

Moreover, another **study has detected different levels of CRISP-1 in two types of azoospermia**. The seminal plasma samples from normospermic and nonobstructive azoospermic donors was CRISP-1 positive, whereas CRISP-1 was absent or present at low levels in samples from patients with obstructive azoospermia.

The antibodies have been obtained from rabbits or sheep, respectively, immunized with a recombinant human Cysteine-Rich Secretory Protein 1 protein produced in *E. coli*. The antibodies have been immunoaffinity purified using the immunization antigen.

RELATED PRODUCTS

RD191260200R	Cysteine-Rich Secretory Protein 1 Human ELISA
RD193262200CS	Cysteine-Rich Secretory Protein 3 Human ELISA
RD172260100	Cysteine-Rich Secretory Protein 1 Human <i>E. coli</i>
RD172261100	Cysteine-Rich Secretory Protein 2 Human <i>E. coli</i>
RD172262100	Cysteine-Rich Secretory Protein 3 Human <i>E. coli</i>
RD172165100	Peptidase inhibitor 16 Human HEK293
RD181260100	Cysteine-Rich Secretory Protein 1 Human, Rabbit Polyclonal Antibody
RD184260100	Cysteine-Rich Secretory Protein 1 Human, Sheep Polyclonal Antibody

NEW ANTIBODIES

CAT. NO.	PRODUCT	REACTIVE SP.	APPLICATIONS	SIZE
RD181371100	Annexin A1 Human, Rabbit Polyclonal Antibody	Human	ELISA, Western blotting	0.1 mg
RD181260100	Cysteine-Rich Secretory Protein 1 Human, Rabbit Polyclonal Antibody	Human	ELISA, Western blotting	0.1 mg
RD181183100	Leucine-Rich Alpha-2-Glycoprotein Human, Rabbit Polyclonal Antibody	Human	Western blotting	0.1 mg
RD184183100	Leucine-Rich Alpha-2-Glycoprotein Human, Sheep Polyclonal Antibody	Human	Western blotting	0.1 mg
RD184304100	Prolactin-Inducible Protein Human, Sheep Polyclonal Antibody	Human	ELISA	0.1 mg
RD181224100	S100A16 Human, Rabbit Polyclonal Antibody	Human	ELISA, Western blotting	0.1 mg

BioVendor – Laboratorni medicina a.s.

Phone: +420 549 124 185

Fax: +420 549 211 460

E-mail: info@biovendor.com

www.biovendor.com